



NINETEEN HUNDRED SIXTY EIGHT











# **SIGNET '68**



**Worcester,  
Massachusetts**

**Editor Joyce M. Carlson**



"Go placidly amid the noise and the haste and remember what peace there may be in silence. As far as possible, without surrender, be on good terms with all persons. Speak your truth quietly and clearly; and listen to others, even to the dull and the ignorant; they, too, have their story.

"Keep interested in your own career, however humble; it is a real possession in the changing of times—

"Be yourself. Especially do not feign affection. Neither be cynical about love; for in the face of all aridity and disenchantment it is as perennial as the grass. Take kindly the counsel of the years, gracefully surrendering the things of youth.

"Nurture strength of spirit to shield you in sudden misfortune. But do not distress yourself with dark imaginings. Many fears are born of fatigue and loneliness.

"Beyond a wholesome discipline, be gentle with yourself. You are a child of the universe no less than the trees and the stars. You have a right to be here. And whether or not it is clear to you, no doubt the universe is unfolding as it should . . ."

Anonymous





**Study . . .**





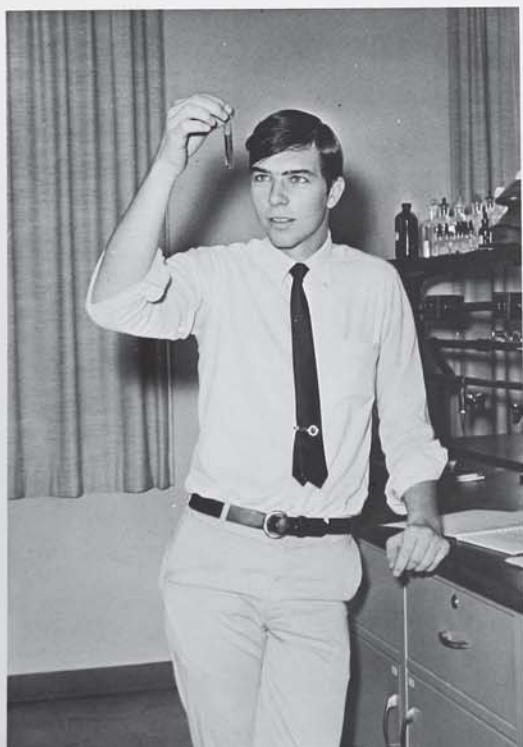






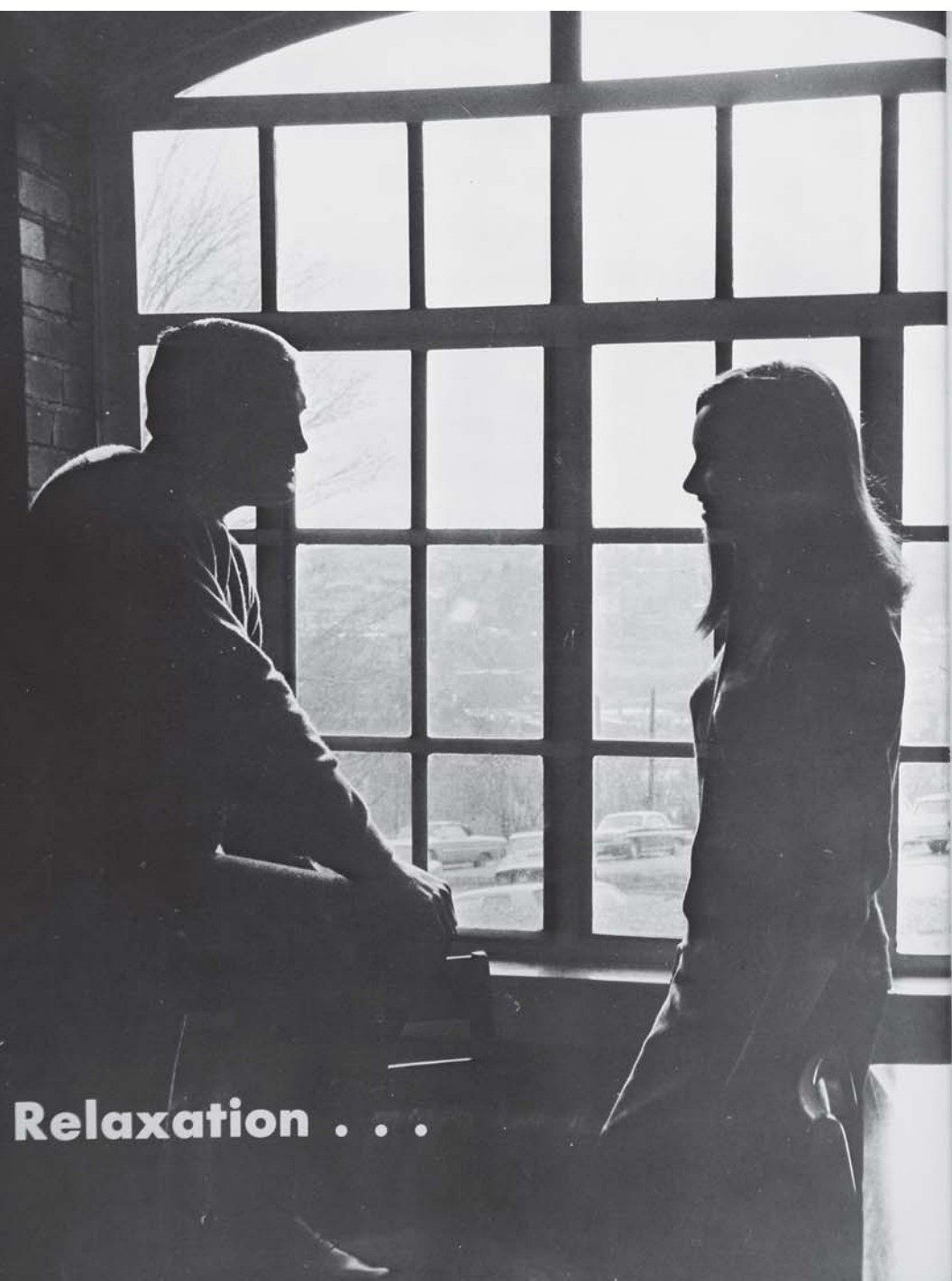


## Exploration . . .

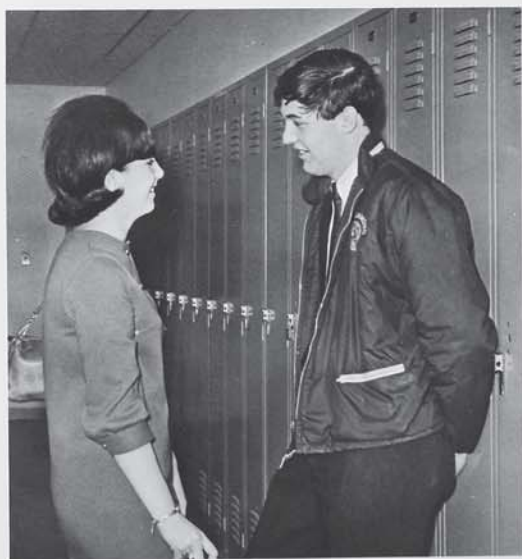








**Relaxation . . .**









A  
c  
h  
i  
e  
v  
e  
m  
e  
n  
t  
.  
.  
.

*The Massachusetts Board of Regional Community Colleges,  
the Administration and Faculty  
of*

**QUINSIGAMOND COMMUNITY COLLEGE**  
WORCESTER, MASSACHUSETTS

*take pleasure in announcing that  
the College has been elected to membership in  
and accredited as a Junior College by*

*The New England Association of Colleges  
and Secondary Schools  
at its Annual Meeting, December 8, 1967*

The mark of this man is his love of life and of people. He gives freely of himself, his enthusiasm and his knowledge. With vitality, he engages in his teaching of psychology. We dedicate this yearbook to Professor Robert P. Bowden, in an attempt to return some of the respect he has given us.

"It is the supreme art of the teacher to awaken joy in creative expression and knowledge."

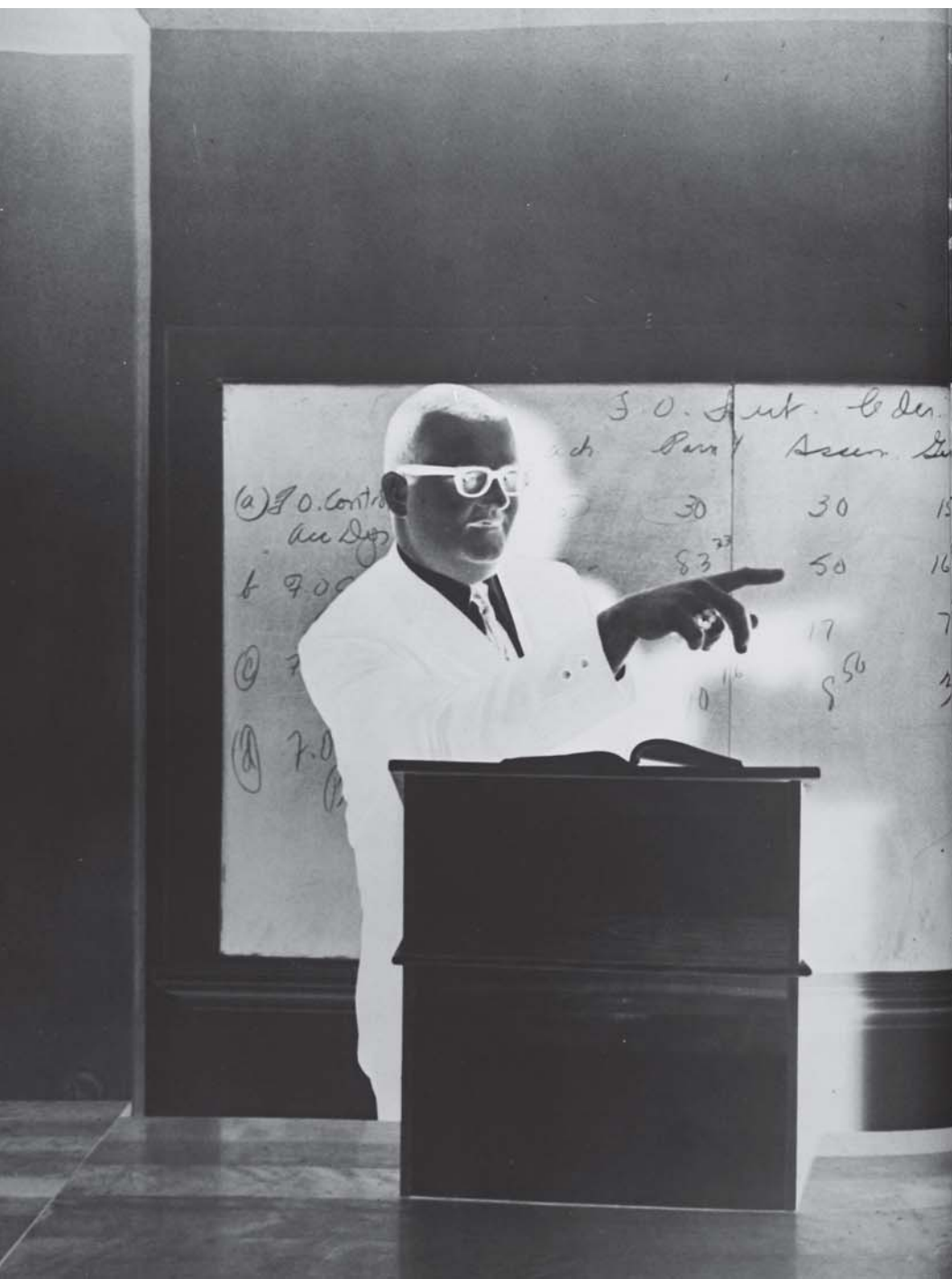
Albert Einstein

## Dedication





**Robert P. Bowden**



# **FACULTY AND ADMINISTRATION**

*Those having torches will  
pass them on to others.  
Plato*



Paul G. Preus  
*President of the College*  
B.A., Luther College  
M.A., University of Iowa







#### PRESIDENT'S MESSAGE

The college age youth in America today seeks greater participation in the affairs of our society. As he seeks greater involvement in the economic, political, educational and social aspects of his life, he then inherits or has thrust upon him greater responsibilities. To seek involvement without the willingness to assume added responsibility places a greater burden on one's neighbor, colleague or friend and further complicates an already complex society.

It serves no purpose to withdraw from society to seek escape from involvement, to "cop out", to leave our neighbor or colleague to carry an increasingly heavy burden of responsibility. One must face up to the awesome problems we have in the world today. QCC students have, through the years, demonstrated their desires to be of help, to shoulder additional burdens, to carry the responsibilities of a good citizen. I am sure my colleagues or faculty, administration and staff would join me in expressing our confidence in you who are the leaders of tomorrow. We place great trust in you; we have a deep faith in your future.

Paul G. Preus

GORDON W. MacPHEE  
Registrar  
Business Administration  
B.S., Clark University  
M.B.A., Boston University

DAVID E. St. JOHN  
Director of Counseling  
Psychology  
B.A., St. Anselm's College  
M.Ed., Boston University  
C.A.S., Assumption College

ROBERT C. GOULD  
Dean of Students  
English  
A.B., Princeton University  
M.Ed., St. Lawrence University  
Ph.D., Boston College





**MARY F. HERNANDEZ**  
 Librarian  
 B.S., Clark University  
 M.S., Simmons College



**SAMUEL L. ALBERT**  
 Director of Continuing Education  
 A.B., Harvard University  
 M.Ed., Boston University

**NELSON G. COPP**  
 Dean of Faculty  
 History  
 B.A., St. Mary's University  
 M.A., Trinity University  
 LL.B., St. Mary's University  
 Ph.D., Boston University  
 Member of the  
 Massachusetts Bar



IRENE P. SMITH  
 Assistant Director  
 of Admissions  
 Secretarial Studies  
 A.B., Regis College  
 M.A., Columbia University



JAMES E. HOULIHAN, Jr.  
 Dean of Administration  
 Chairman, Department of  
 Humanities  
 A.B., Harvard University  
 M.A., Harvard University  
 Ph.D., Boston University



HAROLD P. PARKER  
 Chairman of Admissions Committee  
 Sociology  
 A.B., Middlebury College  
 M.A., Columbia University







EDMUND JAY TIERNEY  
Director of Occupational  
Placement  
A.B., St. Michael's College  
M.Ed., Worcester State  
College

M. ELISABETH GRASSO  
Assistant Librarian  
B.A., William Smith College  
M.L.S., Simmons College



FRANCIS X. GARDNER  
Business Manager  
B.S., Clark University





JUDITH L. CLAPP  
English  
B.A., University of  
Massachusetts  
M.A., University of  
Massachusetts

MARGARET K. WATSON  
English  
A.B., University of Michigan  
M.A., University of Michigan



SIBYL C. JACOBSON  
English  
B.A., St. Olaf College  
M.A.T., Northwestern University

JAMES H. KNOX  
English  
B.A., Vanderbilt University  
M.A., Vanderbilt University



DANA K. ANDERSON  
English  
B.A., University of California  
M.A., Boston University



JOHN F. SCANLAN, JR.  
English  
A.B., Boston University  
M.A., Tufts University



EDGAR S. PARKER  
English  
B.A., University of California  
M.A., Boston University



RAYMOND D. BONITZ  
English  
B.S., Fitchburg  
State College  
M.Ed., Fitchburg  
State College  
M.A., University of  
Connecticut

CAROLYN K. ROBERTS  
English  
B.A., Emerson College  
M.A., Boston University



JANE W. GEORGE  
English  
B.A., University of Toledo  
M.A., Radcliffe College



NIKITAS CHRYSOSTOM  
English  
B.A., Geneva College  
M.A., Columbia University





RALPH K. BOLDUC  
French  
B.A., Assumption College  
M.A., Assumption College

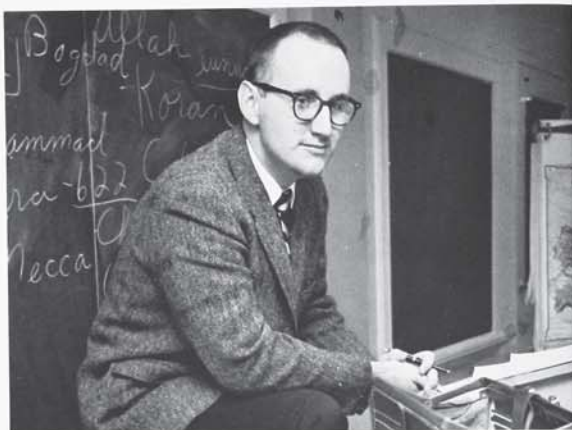


JULIA H. TEIG  
French, German  
B.A., German Teachers College (Prague)  
M.A., Charles University (Prague)  
Diplome, Universite Aix-en-Provence  
(France)  
M.A.T., Assumption College



MARCUS L. GLODELL  
Spanish  
B.S., University of Maryland  
M.Ed., Worcester State College

DAVID C. HOLMES  
History  
B.A., Oberlin College  
M.A., Western Reserve University



ALICIA M. KELLEY  
History  
B.A., Manhattanville College  
M.A., Catholic University  
Ed.M., Boston University



PAUL ROSSMAN  
History  
B.S., Clark University  
M.A., Assumption College



WOODROW J. HANSEN  
Chairman, Department of Social  
Studies  
A.B., University of California  
M.A., Brown University  
Ph.D., Brown University



ELIZABETH A. CHUTE  
Government, Business Law  
LL.B., Boston College  
M.A., University of Rhode Island



PHILIP A. BEAUMONT  
Political Science  
B.S., Boston University  
M.A., University of Nebraska



PETER E. NELSON  
Art  
B.F.A., University of  
Connecticut  
M.F.A., Indiana University



ANDREW M. BROWN  
Music  
Mus.B., Boston University  
Mus.M., Boston University

RALPH A. LENNON, Jr.  
Geography  
B.A., University of  
Massachusetts  
M.A., Clark University

BRIAN L. DONNELLY  
Philosophy  
B.S., Boston College  
M.A., University of Notre Dame





**FERN C. PORTNOY**  
Psychology  
B.S., University of Pittsburgh  
M.Ed., University of Pittsburgh



**WARREN L. HAWKINS**  
Psychology  
B.S., Hofstra University  
M.A., Columbia University  
C.A.G.S., Boston University



**PAMELA E. NOONAN**  
Counselor for Women,  
Psychology  
B.S., Merrimack College  
M.A., Assumption College

**ROBERT P. BOWDEN**  
Psychology  
BA., University of  
New Hampshire  
M.Ed., Worcester State  
College







RUSSELL W. JOHNSON  
Business Administration  
B.S., Boston University  
Ed.M., Boston University



JOSEPH L. JUDGE, Jr.  
Chairman, Department of  
Business Administration  
B.S., Holy Cross College  
M.B.A., Boston University



JOSEPH V. HAGGERTY  
Business Administration  
B.B.A., Northeastern  
University  
M.B.A., Northeastern  
University

JOHN A. CHUPKA  
Business Administration  
B.S., Holy Cross College  
M.A., Clark University





ELIZABETH E. RUTLEDGE  
Secretarial Studies  
B.S., Boston University  
M.C.S., Boston University



JOHN R. SZEREDY  
Secretarial Studies  
B.S., Bryant College  
M.Ed., Worcester State College

J. CHARLES E. LORD  
Secretarial Studies  
B.S., Clark University  
M.A., Columbia University  
C.A.G.S., Boston University

MAUREEN A. MOLLOY  
Nursing  
B.S., Fitchburg State College





**MERIBAH STANTON**  
Nursing  
B.S., Boston College  
M.S., Boston College



**JANET M. SIMMONS**  
Nursing  
B.S., Boston University  
M.S., Boston University

**BETTY L. FOREST**  
Chairman, Department of Nursing  
B.S., Adelphi University  
M.A., Columbia University  
Ed.D., Columbia University



**HELEN E. TASHJIAN**  
Nursing  
A.B., Clark University  
M.N., Yale University



ARTHUR B. KRUPNICK  
Biology  
B.S., University of Massachusetts  
M.A., Clark University



ELEANOR H. PHILLIPS  
Biology  
B.S., Purdue University  
M.A., Clark University



JOHN P. LOPRIORE  
Biology  
B.S., Suffolk University  
M.A., Clark University

MARCUS J. FARRELL  
Biology  
B.S., St. Anselm's College  
M.A., Clark University  
Ph.D., Clark University

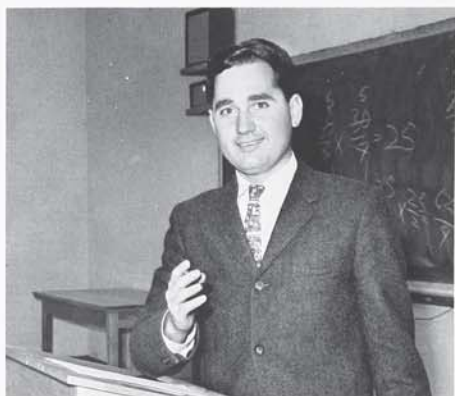


GAIL A. DUBREY  
Mathematics  
B.A., Anna Maria College  
M.A., University of Michigan



ROBERT A. PRIOR  
Biology  
A.B., Merrimack College  
M.A., Clark University





RUSSELL P. BELICO  
Economics, Business Mathematics  
B.A., University of Connecticut  
M.A., University of Connecticut



WALTER ZAKRZEWSKI, Jr.  
Physical Science  
B.A., Clark University  
M.S., Worcester Polytechnic  
Institute

DAVID L. GOLAND  
Mathematics  
B.E.d., Keene State College  
M.S., Ohio State College

ROBERT B. GILLIES  
Mathematics  
A.B., Clark University  
M.Ed., Worcester State College



WLADIMIR GUBENKO  
Engineering  
A.E., Worcester Junior College  
B.S., Lowell Technological Institute



JUDITH G. REILLY  
Physical Science  
A.B., Clark University  
M.A., Clark University



FRANK L. CANOSA  
Mathematics, Engineering  
B.S., Atlantic Union College  
M.S., Worcester Polytechnic Institute



**RALPH E. DUDLEY**  
Chairman, Department  
of Mathematics, Science  
and Engineering  
B.S., Worcester Polytechnic  
Institute  
Ed.M., Boston University  
M.A., Worcester Polytechnic  
Institute



**ALFRED E. WANDREI**  
Engineering  
B.S., University of  
Massachusetts  
Ed.M., Worcester State  
College  
M.S., Worcester Polytechnic  
Institute



**EDWARD L. EAGAN**  
Chemistry  
B.S., Rensselaer  
Polytechnic Institute  
M.S., Purdue University

Olga Arbor  
Head Bookkeeper



Theresa Capurso  
Secretary to Dean of Administration



Joanne M. Bellucci  
Summer Division Secretary



Eunice B. Lockhart  
Secretary to the President



Claire B. Kimball  
College Secretary



## Staff



Mary N. Alzapiedi  
Secretary to Dean of Faculty



Jean Boyle  
Secretary for Continuing Education



Marie Lupisella  
Secretary to Dean of Students

Carol Smith  
Admissions Secretary



Alberta Martelli  
Secretarial Staff



Christine A. Boutillette  
Nursing Department Secretary



Virginia Johnson  
Bookstore Manager



Judith A. Caforo  
Assistant Bookkeeper



Ruth Curry  
Secretarial Staff



Andrew Doyle

Hazel Blash  
Clara Lesperance

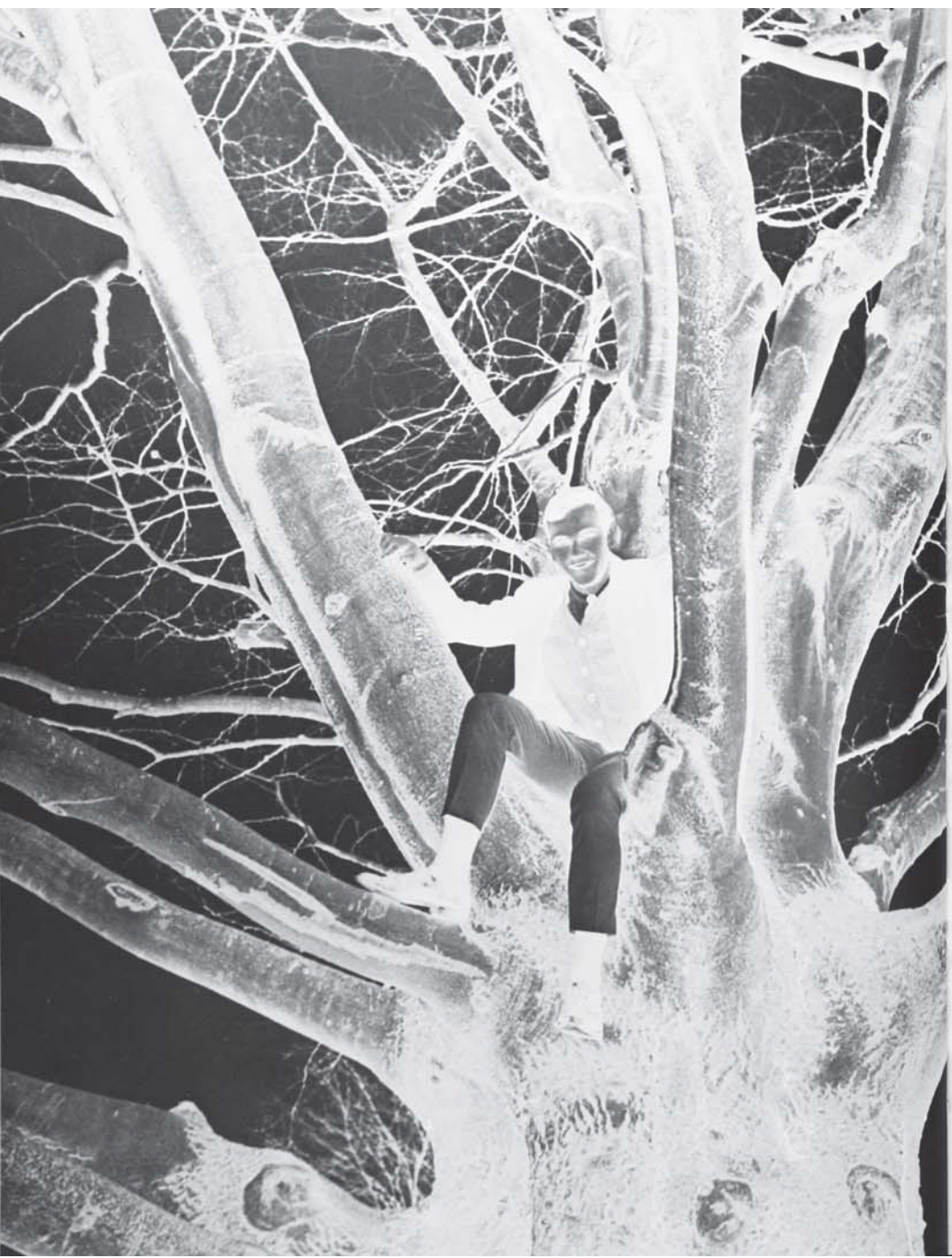
William Moses  
Margaret Smith



Leo DiPilato



Raymond Buffone



# SOPHOMORES

*Two Falls  
Two Winters  
Two Springs  
The calender trees  
have marked their time.*



Virginia G.  
Aguilera  
Nursing



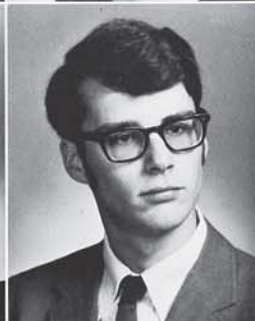
Lorraine A. Armstrong  
Nursing

Christine M.  
Arnberg  
General Liberal  
Arts

Karen S. Arnowski  
Executive Secretarial



Linda M. Bacchiocchi  
General Liberal Arts



Michael Bartlett  
Engineering  
Technology

Judith A. Barwell  
Executive  
Secretarial

Marietta L. Barwick  
Nursing





George R. Blomquist  
Liberal Arts



Marion J. Blough  
Liberal Arts



John R. Becker  
Liberal Arts



Mary D. Biros  
Liberal Arts



Philip R. Bourget  
Liberal Arts



Calvin S. Bowker  
Liberal Arts

Margaret A. Bowler  
Nursing



Sandra J. Bruso  
Liberal Arts



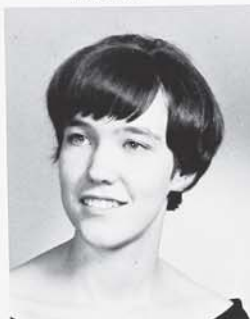


Bruce E. Buck  
Business  
Administration



Allen Bull  
Liberal Arts

Elaine M. Callahan  
Liberal Arts



Marion T. Caplette  
Nursing



Joyce M. Carlson  
Liberal Arts



Rosanne Carriveau  
Executive  
Secretarial



Robert J. Chadwick  
Business Administration

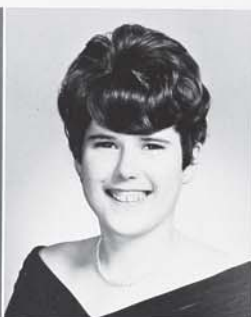
Anne M. Chamberlain  
Executive Secretarial



Paul T. Cassidy  
Liberal Arts



Paul F. Cesario  
Liberal Arts



Susan J. Chapin  
Liberal Arts



Francis Cicio  
Liberal Arts



*Learning teacheth  
more in one year  
than experience  
in twenty.*  
*Roger Ascham*

Neal J. Comen  
Liberal Arts



Donna M. Contois  
Liberal Arts



Donna M. Crowley  
Executive Secretarial



Judith A. Crowley  
Executive Secretarial

George I. Cullina  
Basic Engineering



Kenneth W. Curll  
Liberal Arts



Cynthia M. Czabaj  
Executive Secretarial



Joseph P. Daigneault  
Liberal Arts



Francis R. Damore  
Liberal Arts



Merrill A. Dana  
Basic Engineering

Nancy L. Day  
Business  
Administration



Grace A. DeMichele  
Executive Secretarial







Janice DePalma  
General Liberal  
Arts



Paul J. Doucette  
Engineering  
Technology

Therese M. Doyle  
Executive Secretarial

James W. Drolet  
Business Administration



Patricia A. Duffy  
Executive Secretarial



Winifred J. Duffy  
General Liberal Arts



Lucille T. Dumas  
Liberal Arts



Patricia D. Dwight  
Liberal Arts

David R. Ekberg  
Liberal Arts

Evelyn M. Elander  
Liberal Arts



John J. Dyer  
Business Administration



Dana W.  
Ehrlinger  
Liberal Arts



Paul M. Faford  
General Liberal Arts



Charles W. Fehser  
Basic Engineering

Ernest J. Fitzback  
Liberal Arts



George S. Flouris  
Liberal Arts





Paul R. Galipeau  
Business Administration



Mary E. Gannon  
Nursing



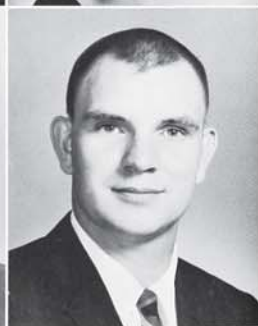
Jo-Anne Garney  
Executive Secretarial



Brenda E. Garvey  
Liberal Arts



Alfred R. Gelinas  
Nursing



Alfred H. Gelinas  
Nursing

John J. Giordano  
Business Administration

Renee L. Gold  
Liberal Arts



Thomas M. Georgan  
Liberal Arts



Barbara C. Gill  
General Liberal Arts



Sherman H. Goldstein  
Liberal Arts



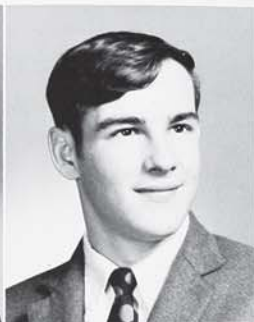
Linda M. Goodfield  
Executive Secretarial





Kathleen A.  
Gormley  
General Liberal Arts

John R. Graf  
Basic Engineering



Diana L. Gubana  
Executive Secretarial

Geanne A. Guerry  
Business Administration

Philip J.  
Greenleaf  
Liberal Arts

Dennis L. Grolcau  
Business Administration





Donita M. Hackenson  
Liberal Arts



Cheryl J. Harris  
General Liberal Arts



Rhoderick L. Harrison  
Liberal Arts



Robert W. Harvey  
Business Administration



Judith A. Hayden  
Executive Secretarial



Thomas H. Hill, Jr.  
Engineering  
Technology





Bonnie L. Hopewell  
Executive Secretarial

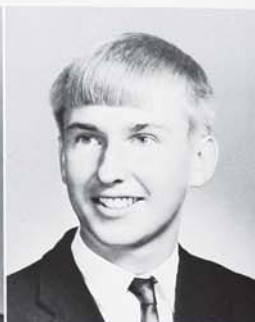


Ann K. Jastremski  
Liberal Arts

Bruce E. Johnson  
Liberal Arts



William E. Johnson  
Liberal Arts



Anita F. Jolly  
Executive Secretarial



Sandra L. Jones  
Executive Secretarial



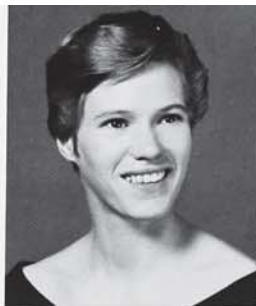
Jacqueline A. Josti  
Executive Secretarial



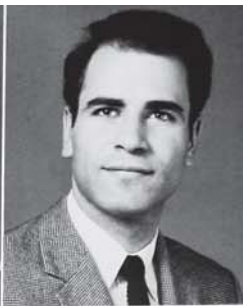
Martin P. Kane  
Business Administration

Irene H. Kozlowski  
Liberal Arts

Gerald M. Kristoff  
Business Administration



Anne A. Kelly  
Nursing



Michael Korkidis  
Business Administration



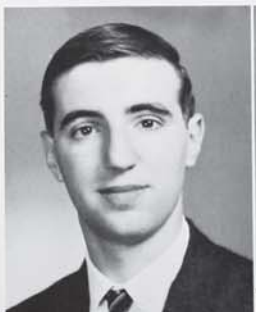
Charlotte M. Kruzewski  
Liberal Arts



Deanna L. Kurgan  
Executive Secretarial

James L. Lachapelle  
Business Administration

Lucille D. Lafleche  
Executive Secretarial





June A. Lawrence  
Business Administration



Amelia Leontire  
Executive Secretarial

Linda A. Leyden  
General Liberal Arts



Duane G. Lindblom  
Liberal Arts



Boleslaw L. Linga  
Liberal Arts



Marjory A. Lynch  
Business Administration



Nancy B. MacKay  
Liberal Arts

Edna Madzongwe  
Liberal Arts



Donald A. Lyonais  
Engineering



Donna C. MacKay  
Executive Secretarial



Thomas J. Markley  
Liberal Arts



Anne M. Masciarelli  
Liberal Arts



*Some friendships  
are made by nature,  
some by interest,  
and some by souls.  
Jeremy Taylor*





Barbara A. Massey  
General Liberal Arts

Sharon P. Mathieu  
Nursing



Kenneth P. McCallum  
Engineering  
Technology

Joan E. McConnon  
Nursing

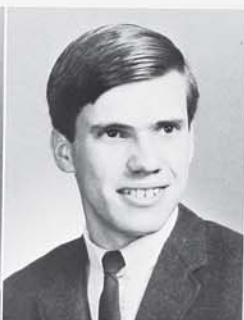
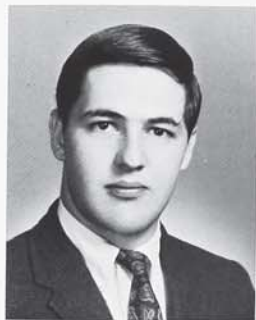
Joseph P. Mazzoleni  
Liberal Arts

Vivian I. McCabe  
Executive Secretarial



Dennis H. McGuiness  
Business Administration,

Paul A. McIlvaine  
Business Administration,



Bruce W. McKeon  
Engineering Technology

Jean F. McNerney  
Liberal Arts

Bernard J. Melican  
Liberal Arts

Elizabeth R. Mikelonis  
Office Assistant

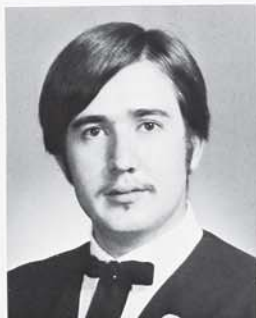




Carnig Mikitarian  
Liberal Arts



Craig R. Morgan  
Engineering Technology



Terrence M. Muir  
Liberal Arts



Maureen J. Mulhearn  
Nursing



Jonathan W. Murphy  
Business Administration



Randy C. Nichols  
Liberal Arts



Anne M. Noone  
Nursing



Karen A. Ober  
Executive  
Secretarial

Anthony J. Perna  
Business Administration

Bobby L. Perry  
Engineering  
Technology



Ralph E. Oosterman  
General Liberal  
Arts



Christine M. Papison  
Executive Secretarial



Edward R. Perry  
Business Administration



William R. Porter  
Liberal Arts

Kathleen E. Power  
Nursing

Maureen E. Quinn  
Nursing





Diane M. Rano  
General Liberal  
Arts



Judith A. Rawding  
Executive Secretarial

Cora A. Reardon  
Nursing

Kathleen M. Richter  
Business Administration



William C. Rousseau  
Liberal Arts



Kendall A. Russell  
Business Administration





Clifford R. Sawyer  
Business Administration

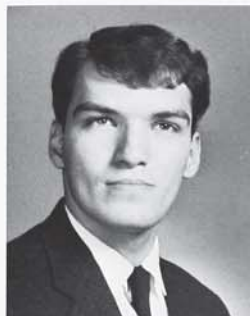
Paula F. Scerra  
Liberal Arts



Nancy E. Ryznal  
General Liberal  
Arts



Helen V. St. Germain  
General Liberal  
Arts



Robert P. Schmidt  
Liberal Arts



Linda J. Schonberg  
Liberal Arts





Janet L. Schunke  
Executive  
Secretarial

David G. Sears  
Business Administration,



Susan J. Sheldon  
Executive  
Secretarial

Paul A. Simard  
Engineering  
Technology

Albert C. Sharistianian  
Liberal Arts

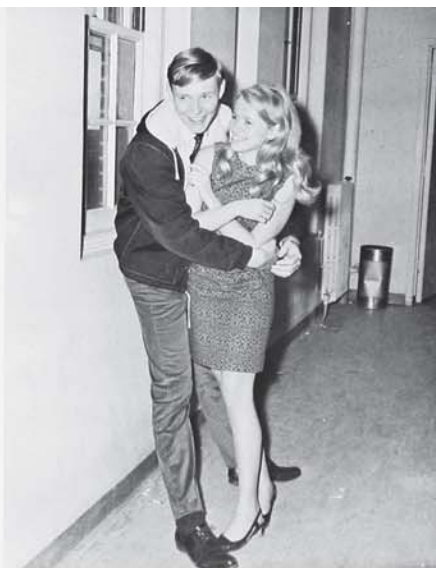
Kathe E. Shaw  
Liberal Arts



Rosamond T. Sizelove  
Liberal Arts



Donna M. Smeltzer  
Liberal Arts



Mary W. Soo Hoo  
Liberal Arts



Wallace P. Soucy  
General Liberal  
Arts

Katherine A. Stockmal  
Executive Secretarial



Margaret G. Suidak  
Nursing





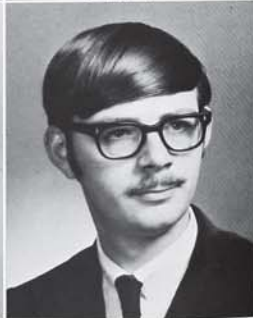
James J. Sullivan  
General Liberal  
Arts



Norman P. Sundin  
General Liberal  
Arts

Gabrielle A. Tellier  
Nursing

Dennis M. Terasconi  
Business  
Administration

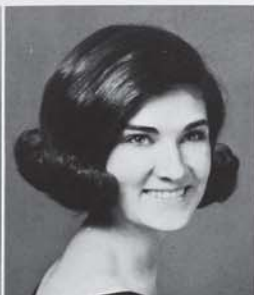


Ursula S. Toscano  
Nursing

Ann M. Trainor  
Executive Secretarial

Rosanne G. Thibault  
Nursing

James P. Toohey  
Business Administration



William F. Viano  
Business Administration

Patricia L. Walsh  
Liberal Arts



Frances M. Traynor  
Nursing



Jo-Ann L. Trombly  
Executive Secretarial,



Mary B. Ware  
Liberal Arts



John H. Wetherell  
General Liberal  
Arts

Irene J. Wiles  
Executive Secretarial

Anne F. Williams  
Executive Secretarial  
Career



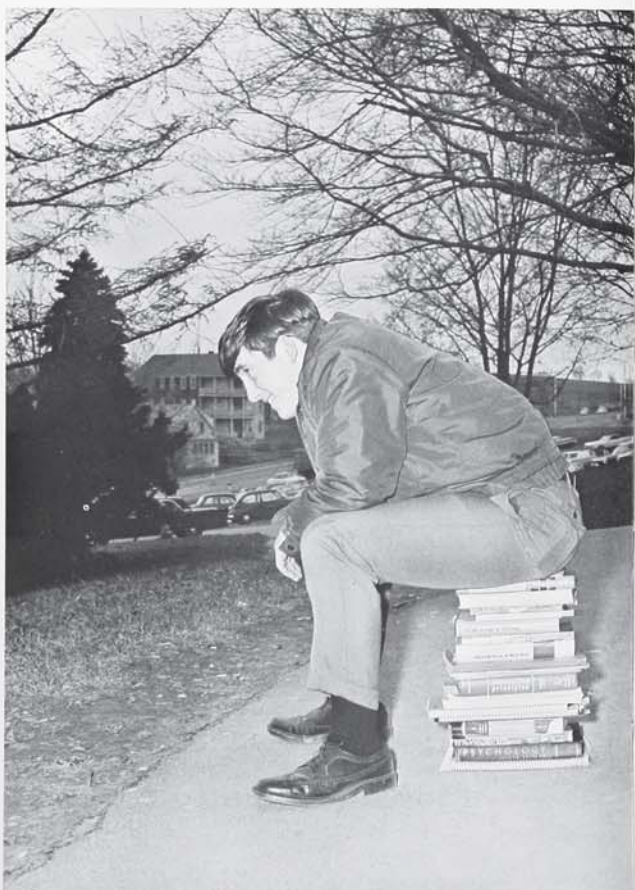




Charlotte A. Young  
Nursing



Ann M. Yuryan  
Liberal Arts



## Class History

The 1968 Class of Quinsigamond Community College began its freshman year in the fall of 1966 with 708 members. Our Freshman Year started with a week of orientation including a lecture at the Little Theater and a banquet at the Y.W.C.A. The banquet was followed by the Welcome Freshman Dance sponsored by the Social Committee.

Beanie week followed and amidst the confusion of a new school and new people, we had to contend with the threats of the sophomores. It ended for most of our class in the same place, Beanie Court.

One of the first things we had to do as Freshmen was to elect the vice-president, corresponding secretary and members at large from our class to the Student Council. Robert Carrachiolo, and Cheryl Hogan were elected to the positions of vice-president and corresponding secretary, respectively.

Beginning in September and continuing throughout the year, there were many Lectures and Performances which we had to attend. These included such famous people as H. S. Commanger, James Farmer and Malcolm Fraser.

The Winter Carnival came and went leaving in its path a joyous memory of frolic and great fun for all who attended. It lasted from February 16th to February 18th, ranging in its activities from skiing and tobogganning to dining and dancing, which were enjoyed by all.

The play "Endgame" was directed by Miss Dana Anderson, a member of the faculty. The four member cast consisted of Kenneth Damore, Elaine Sontag, John Sanders and Ralph Wyman, a member of the Freshman Class.

Our school picnic was somewhat shadowed by rain but our spirits were not dampened. After a day of horseback riding, baseball and other "extra curricular" activities, we danced that night to the music of the Jones'. The picnic was held at Glenn Ellen Country Club in Milis, Mass.

Before finals came the time for us to elect members of our class to the Student Council. Calvin Bowker was elected President; Bill Linga, Treasurer; Cheryl Hogan, Secretary; Joyce Carlson, Terry Muir, Donna MacKay, Joseph Daignaneaut, and Donna Hackenson were elected Members at large.

We the surviving members of the class began our Sophomore year in the Fall of 1967.

Officers of the Social Committee for 1967 were Dennis McGuinness, Chairman; Leslie McGrath, Vice Chairman; Amelia Leontire, Secretary; and Robert Schmidt, Treasurer. Professor Bowden was faculty advisor.

Our basketball season soon began and for the first time in the history of the school we had Cheerleaders. They were Maureen Murphy, Co-Captain; Linda Bacekio-rehi, Co-Captain; Roseanne Ferraro, Lynn Cushing, Jo-anne Hurst, Barbara Masseir, Maureen Fortin, Doreen Sinkus and Carol Palilunas. The basketball team did exceptionally well throughout the season and was invited to a Community College Tournament, March 8 and 9, sponsored by Greenfield Community College.

On December 8, 1967, what we all had been waiting for was accomplished by the foresight of our President, Paul Preus. Quinsigamond Community College was accredited!

Our anticipation grew stronger for with the coming of Spring would be the long awaited event of graduation. With mid-semesters over and finals being our last goal, the question was "to be or not to be" a graduate of Quinsig. As the hustle and bustle increased and the studies became more intense, we ran about preparing for that final day when, donned with our caps and gowns, we would take one last look at dear ol' Quinsig, turning thence to the cold, cruel world, earnestly trusting that the knowledge imparted to us from our most venerable professors would bring us upward and onward to a greater glory.



# ACTIVITIES

*Action is the proper  
fruit of knowledge.*

*Thomas Fuller*



**Student Council**



**Finance Committee**





**Constitution  
and By-laws  
Committee**

**Judiciary Board**



## Handbook Committee



## The Quill



**Ski  
Club**



**Sailing  
Club**



## **Drama Club**



## **Concert Choir**





**Social Committee**



# Signet Staff 1968



## *STAFF*

Donna Contois  
Donna Hackenson  
Sandy Bruso  
Brenda Garvey  
Leslie McGrath  
Rosanne Ferraro  
Lois Gurlitz  
Susan Hoey

## *EDITOR*

Joyce Carlson

*Taylor Publishing Company*  
*Representative*

Richard Lowe

## *PHOTOGRAPHY*

William Rousseau  
Craig Morgan  
American Photograph Corporation

## *ART*

Eileen McKiernan  
Robert Walker

## *FACULTY ADVISORS*

Gordon MacPhee  
Sibyl Jacobson  
John Szeredy

## **Varsity Cheerleaders**





Malcolm Frager, Pianist



James Farmer, "The Black Revolution"

# Lectures and Proformances



Thom O'Hara, Guitarist and His Wife,  
Kristina



**Queen And Court**





## **“Somewhere My Love”**

**Spring Formal, June 4, 1967  
Sheraton-Boston Hotel**



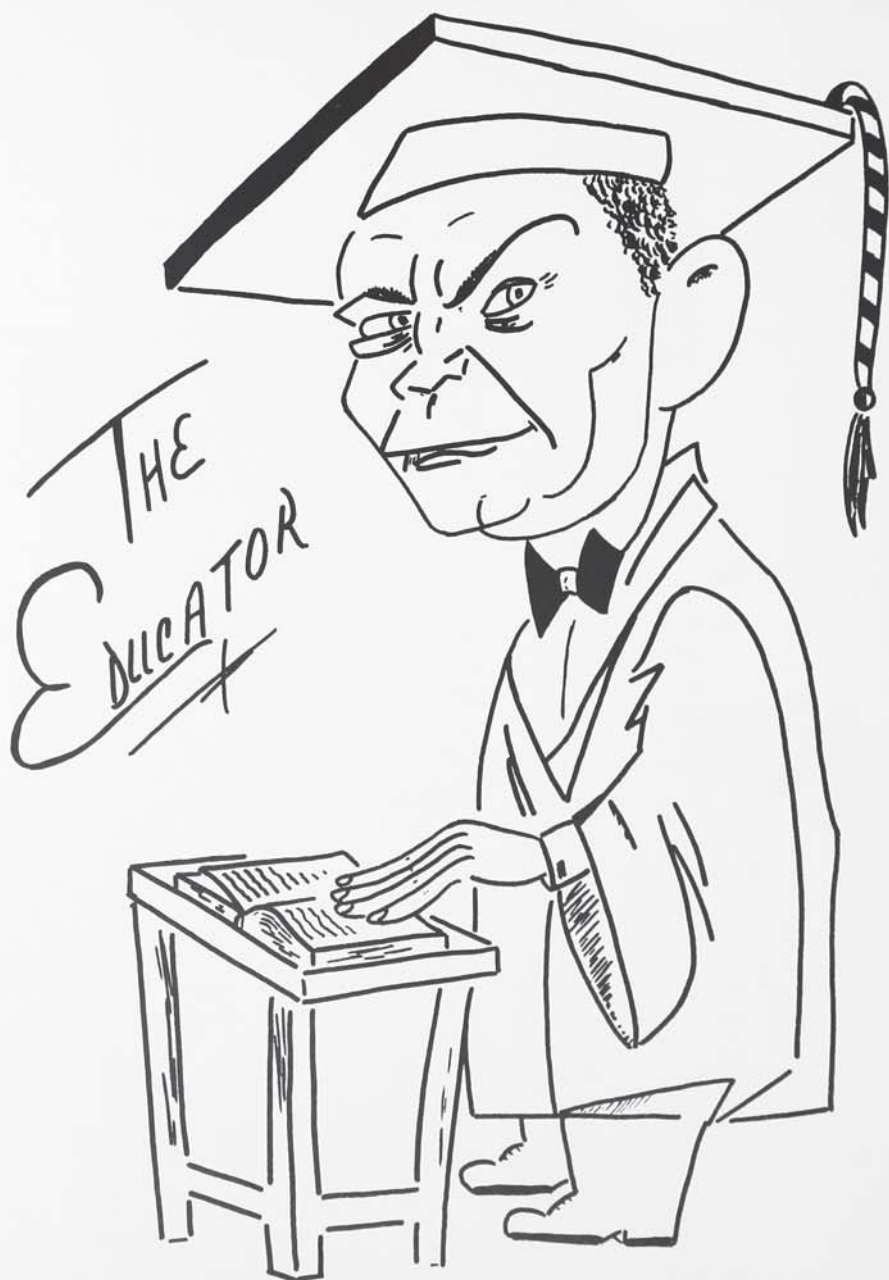
**Donna Crowley  
Queen**

# EXAMINATION BOOK

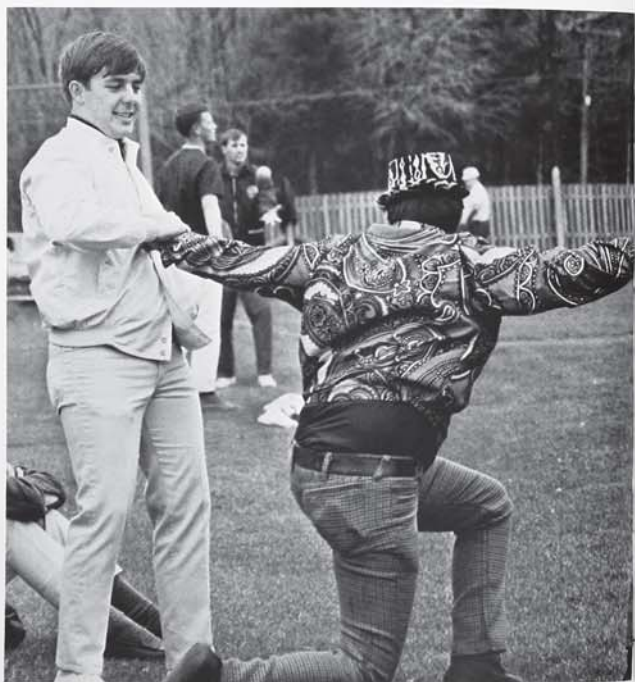
"EXAMINATIONS ARE FORMIDABLE EVEN TO THE BEST  
PREPARED, FOR THE GREATEST FOOL MAY ASK MORE  
THAN THE WISE MAN CAN ANSWER."

C.C. COLTON





Somehow, I don't go in much for Greek Dancing!



How come I have never seen you around the school before, Honey???









Hee, Hee, Hee, ...

I'm not that kind of girl!





Just dance, don't sing!

I'm a little tea kettle . . .





Betcha didn't know that people who like to be tickled are also over-sexed



Aah! I forgot the pill!!!!



I hope he likes being a father.





You can't see, but we are just having a ball under the table.

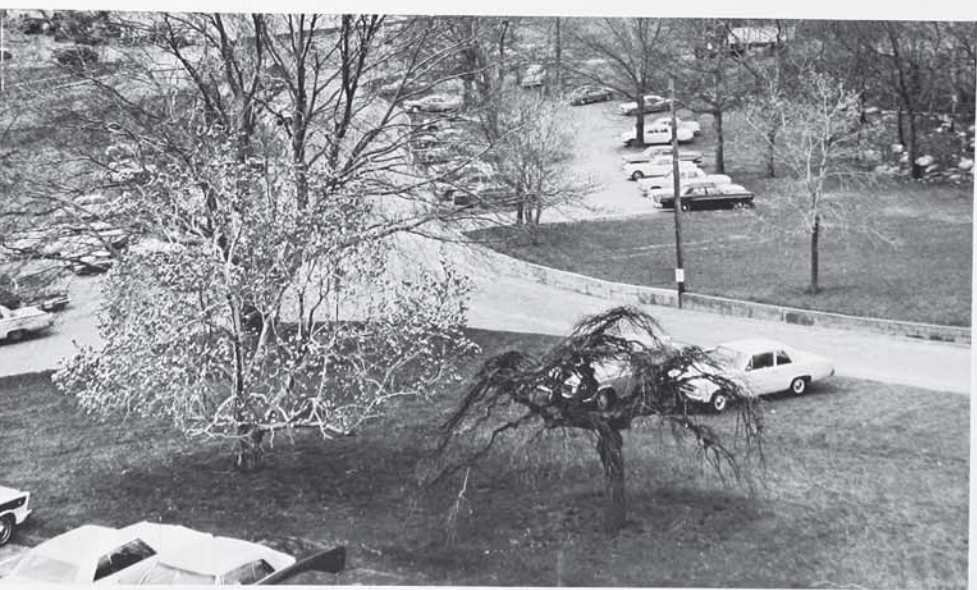


Could it be my breath???

I always happy.



Shove it!!!





I just love escargots.

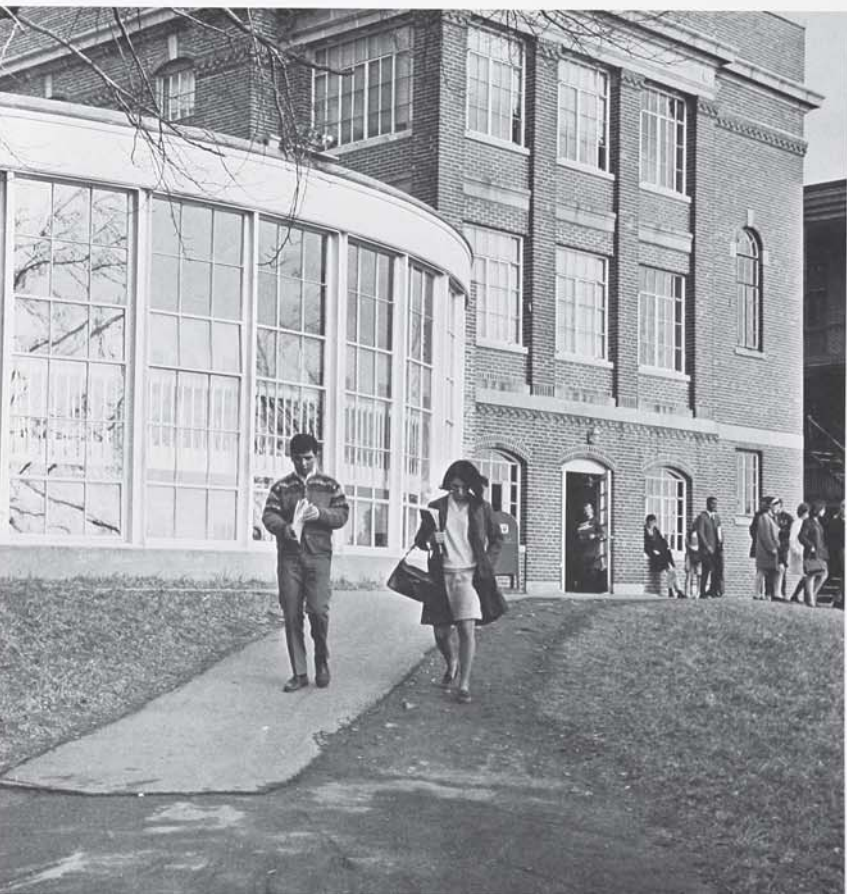


Dear God . . .



A pot party! Where???

We know where you're going. Hee, Hee!







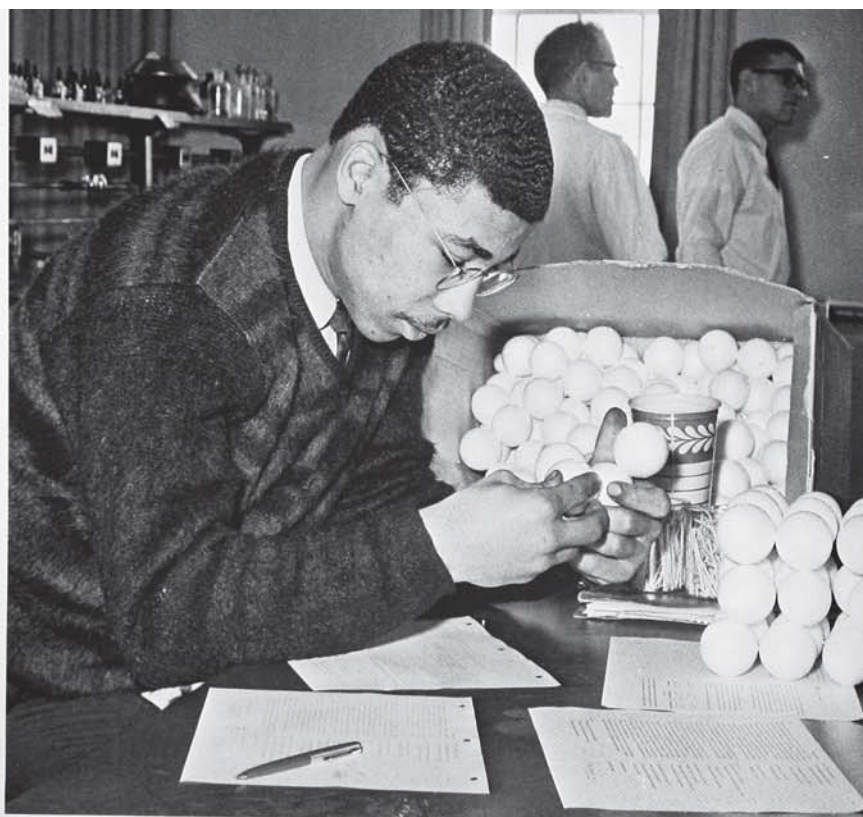
I brush my teeth before every speech.



Here honey, put this on.



Whadaya mean have I been a good girl?



Oh Balls!

This is sure a helluva way to make wine!



Hiawatha's Mother



# Basketball Scores

	Quinsigamond Community College	
North Essex Community College	90	84
Worcester Junior College	66	63
Assumption College, J.V.'s	94	72
Mass. Bay Community College	65	72
Greenfield Community College	70	80
Springfield College, J.V.'s	85	82
W.I.T.I.	82	84
Holy Cross College, J.V.'S.	120	68
Fitchburg State College, J.V.'S.	63	83
Mass. Bay Community College	61	71
W.I.T.I.	58	84
Andover Institute of Business	73	83
Worcester Polytechnical Institute, J.V.'s	99	73
Greenfield Community College	97	91
Fitchburg State College, J.V.'S	79	89
Springfield Technological Institute	107	101
Andover Institute of Business	74	86

# The Chiefs



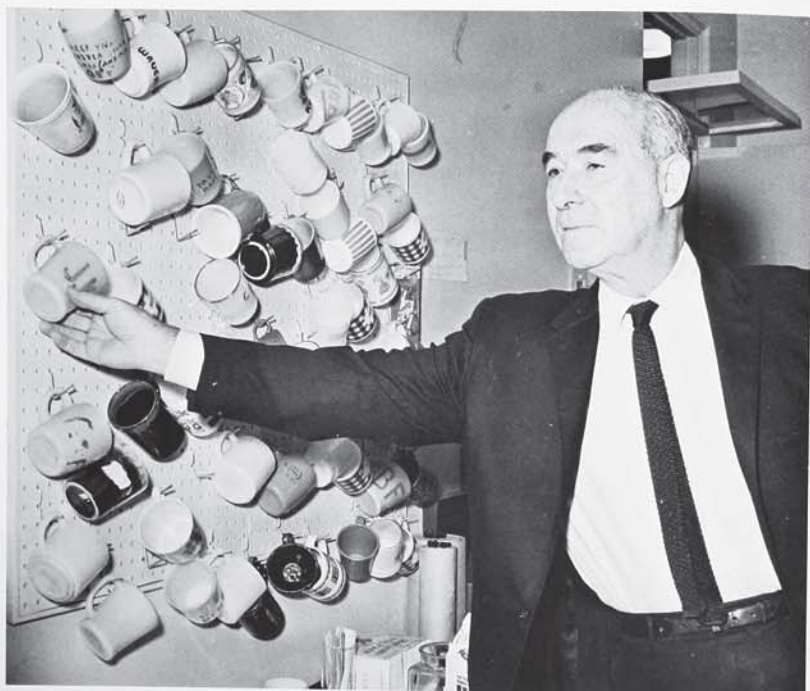


## **Their Squaws**



## **In Action**

What happened? It was full when I hung it up.



Oh boy! She sure makes me hungry...



Want a job? A buck an hour and all you can eat.





Don't feel bad, maybe you will be Queen for a day next year.

One more "F" and I'll jump.

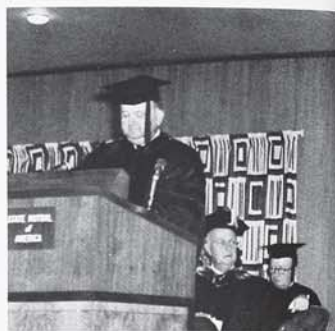


As you can see, this exercise has very little effect on one's bust line, but, it sure does wonders for the biceps.





But Sir,



I expected a diploma, not Green Stamps.



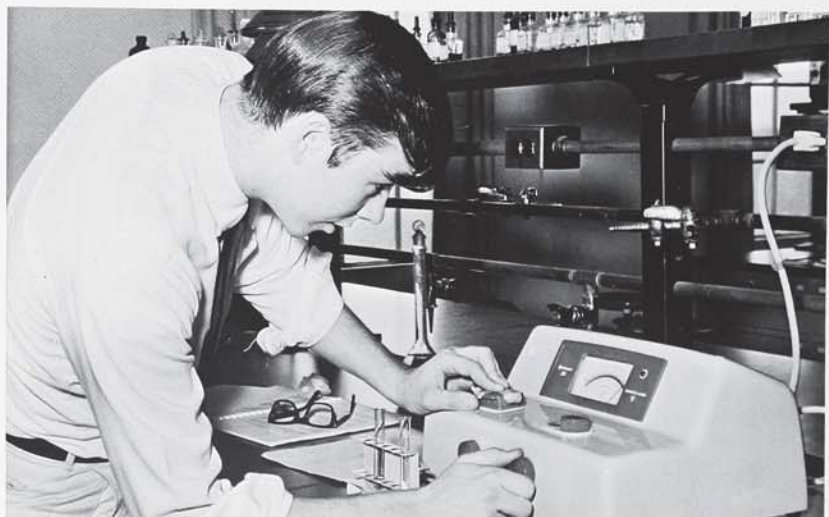
If I can parlay the number "7" horse for the daily double, then . . .



The Ladies Room is bugged!!



Dial A Prayer





You don't seem to understand how important I am!



Vodka Apples!



Wathn't that thweet?



Two parts Scotch, One part Gin, Four ...



I should have danced all night.



Our group had 36% fewer pregnancies!!!



It's better than using the furniture in Rm. 252!



The way I look at it girls, is if you hadn't put me wise to Listerine, I wouldn't have been asked to the party, and I wouldn't be in this condition now!



I don't know why Clara wants this in the cafeteria after we're done with it?



She does sound better in stereo, doesn't she?



Hey, this heart is still beating!!!



Where did you catch the coat honey, under the sink?





QUINSIGAMOND COMMUNITY COLLEGE

Presents

# WEST SIDE STORY

(Based on a conception of Jerome Robbins)

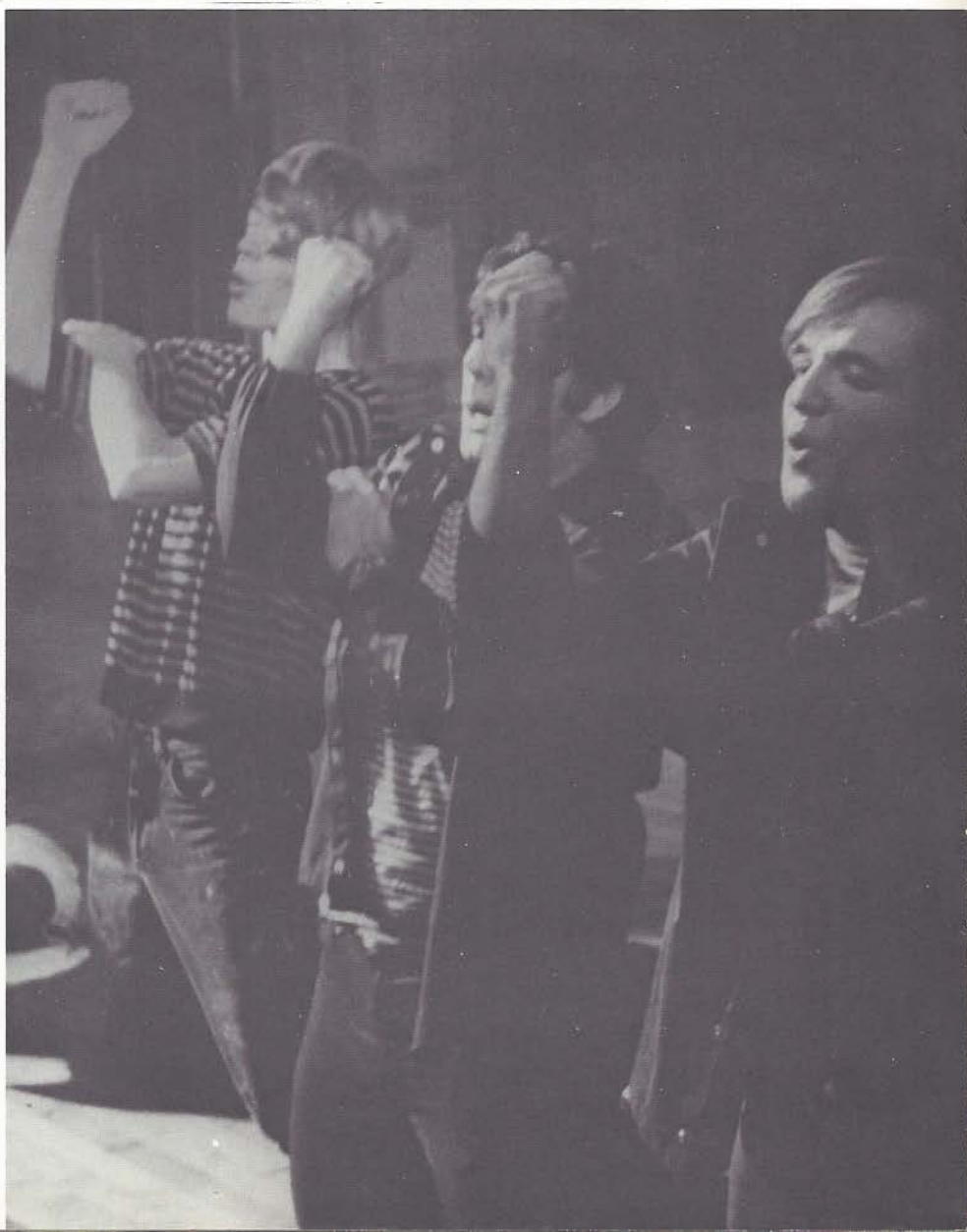
Book by: Arthur Laurents

W  
E  
S  
T

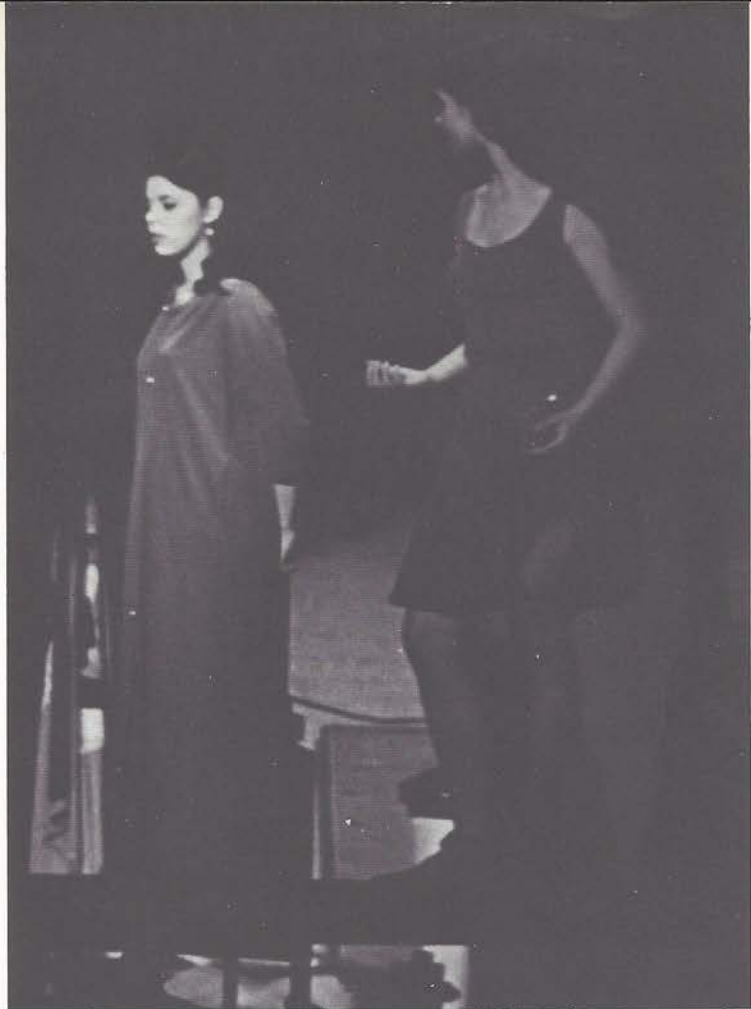
Direction and Choreography  
DANA K. ANTONIO

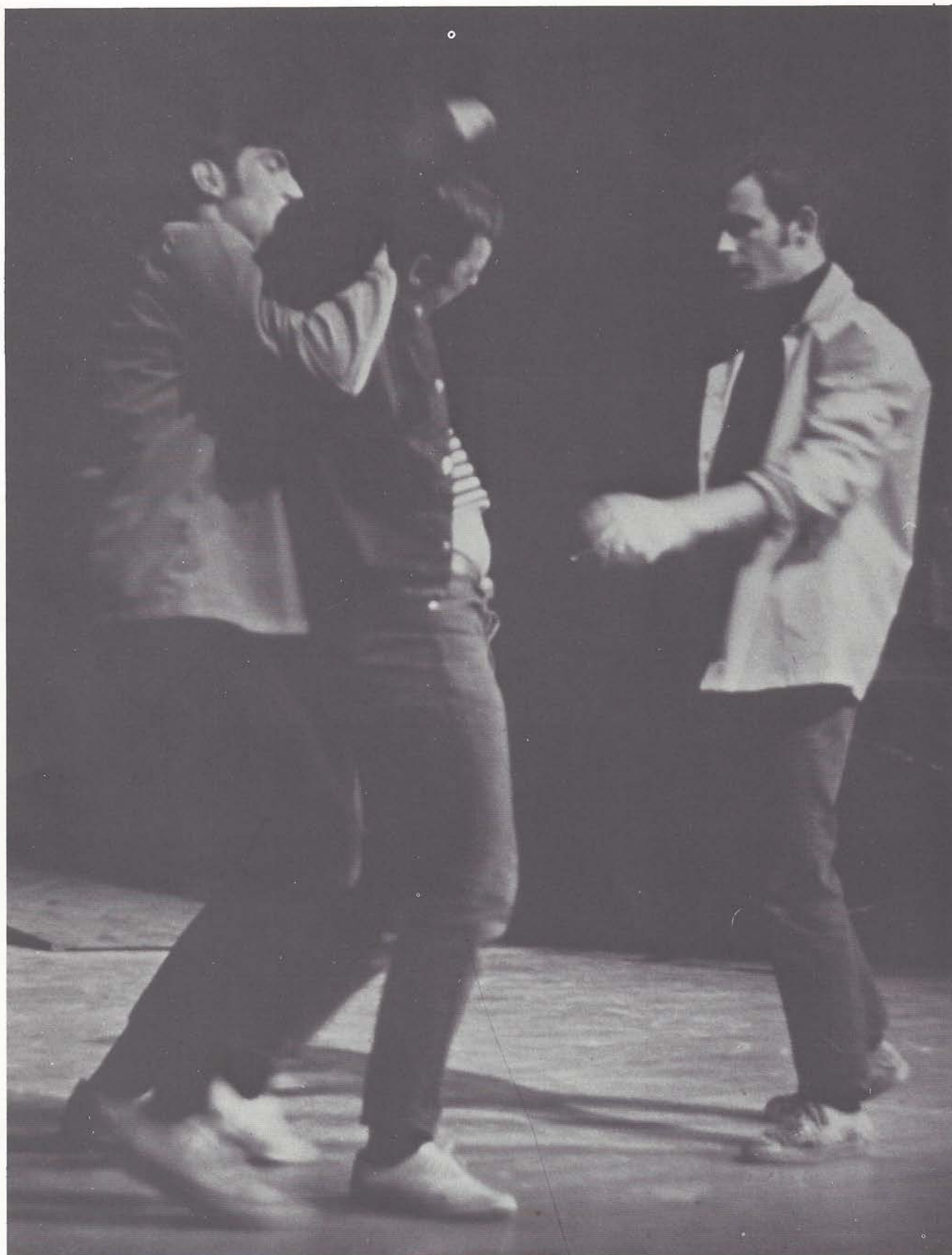
Set Design and Lighting  
RANDY PUTNAM

ALDEN MERRILL  
WORCESTER 1  
MAF









# Love Is Blue

June 2, 1968



Queen  
Anne M. Noone





Queen's Court



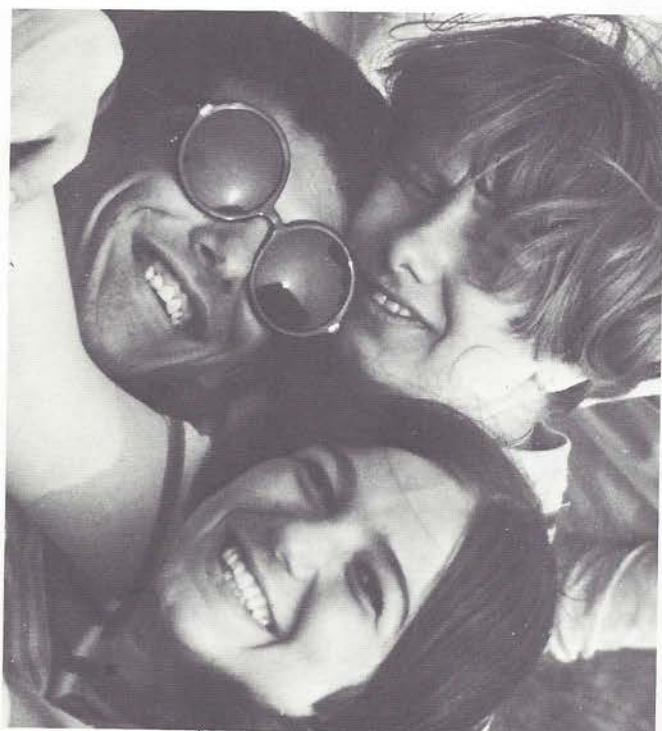
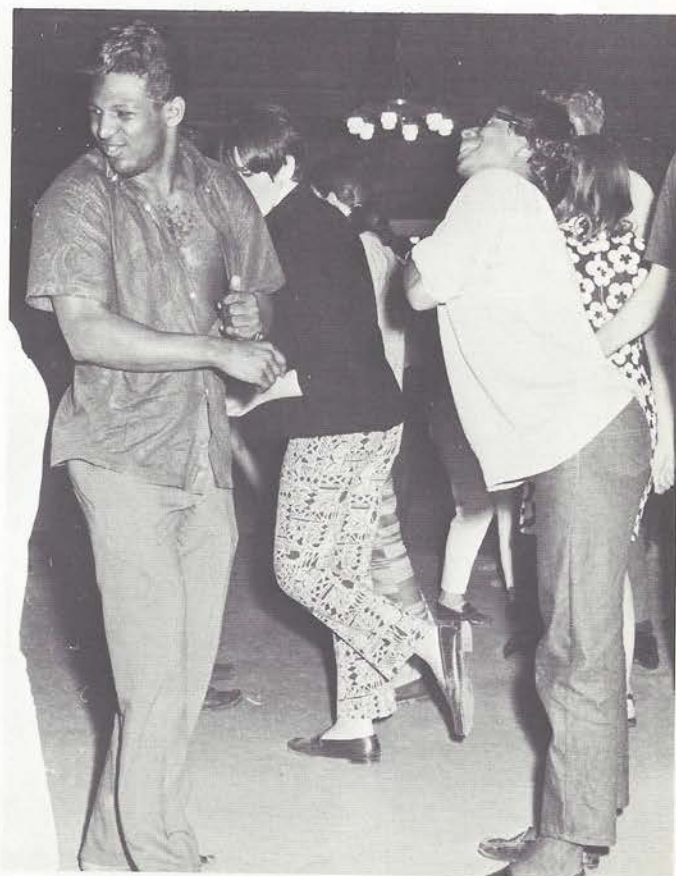
# Honors and Awards Luncheon

June 5, 1968













# Spring Picnic

May 16, 1968

Glenn Ellen  
Country Club

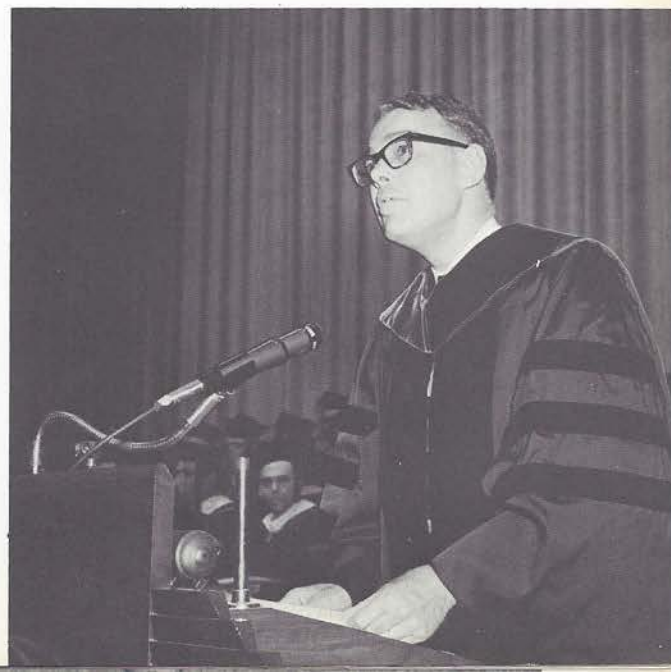
Millis, Mass.



# Graduation



Worcester  
Auditorium







June 6, 1968

MOISTEN GLUE AND STICK IN BACK OF YEARBOOK - INSIDE OF COVER - LET BOOK SET ONE HOUR TO SECURE STICKING  
BE SURE GLUE IS MOISTENED EVENLY



# Quinsigamond Community College

## Sophomore Directory

AGUILERA, Virginia G.	Nursing	CHADWICK, ROBERT J.	Bus. Admin.
Grafton State Hospital, No. Grafton, Mass.		30 Barrett Avenue, Worcester, Mass.	
ANDERSON, Arthur F.	Liberal Arts	CHAMBERLAIN, Anne M.	Exec. Secretarial
40 Station Street, Worcester, Mass.		106 River Street, Hudson, Mass.	
ANDERSON, Dale W.	Gen. Liberal Arts	CHAPIN, Susan	Liberal Arts
127 Park Hill Ave., Worcester, Mass.		12 Edin Street, Worcester, Mass.	
ANGERS, Bernard P.	Liberal Arts	CHRISTY, Constance	Liberal Arts
19 Almont Avenue, Worcester, Mass.		8 Morningdale Road, Worcester, Mass.	
ARENA, Kenneth P.	Liberal Arts	CICIO, Francis A.	Liberal Arts
18 March Street, Worcester, Mass.		15 Shamrock Street, Worcester, Mass.	
ARMSTRONG, Lorraine A.	Nursing	CIESLUK, John Z.	Liberal Arts
215 Providence Rd., Northbridge, Mass.		64 Spruce Street, Clinton, Mass.	
ARNBERG, Christine M.	Gen. Liberal Arts	CLANCY, Mary Ann	Gen. Liberal Arts
29 Flagg Road, Shrewsbury, Mass.		51 Colby Avenue, Worcester, Mass.	
ARONIE, Martin D.	Liberal Arts	CLOUGH, Robert G.	Bus. Admin.
7 Everard Street, Worcester, Massachusetts		65 Wall Street, Spencer, Mass.	
ARNOLD, Mark S.	Liberal Arts	COCKER, Beverly A.	Gen. Liberal Arts
61 Wilson Drive, Framingham, Mass.		123 Warren Avenue, Marlboro, Mass.	
ARNOWSKI, Karen S.	Exec. Secretarial	CODY, Christine F.	Liberal Arts
2 Esther Street, Worcester, Massachusetts		Manchaug Road, East Douglas, Mass.	
ATHANASSIOU, Fotis	Exec. Secretarial	COGSWELL, David K.	Liberal Arts
69 Merrick Street, Worcester, Mass.		122 Bigelow Street, Marlboro, Mass.	
BACCHIOCCHI, Linda M.	Gen. Liberal Arts	COLECCI, Michael A.	Engineering Tech.
4 Goodrich Court, Milford, Mass.		12 Brookway Drive, Shrewsbury, Mass.	
BADGLEY, Barbara S.	Nursing	COMIN, Neal	Liberal Arts
16 Saturn Drive, Shrewsbury, Mass.		20 Sherwood Road, Worcester, Mass.	
BANCROFT, John R.	Bus. Admin.	CONLEY, James F.	Liberal Arts
8 Prospect Street, W. Boylston, Mass.		18 Prospect Street, Milford, Mass.	
BARNES, Harry I.	Liberal Arts	CONTOIS, Donna A.	Liberal Arts
65 Lake Avenue, Leicester, Mass.		14 Mohawk Drive, Northboro, Mass.	
BARROWS, Josephine G.	Nursing	CONWAY, George E.	Bus. Admin.
300 Massachusetts Road, Worcester, Mass.		18 Hawthorne Street, Natick, Mass.	
BARTLETT, Michael	Engineering Tech.	COPPOLINO, Frank J.	Bus. Admin.
241 Grafton Street, Shrewsbury, Mass.		15 Milbury Street, South Berre, Mass.	
BARTLETT, Wayne C.	Bus. Admin.	CORRIVEAU, Roxanne	Exec. Secretarial
Harford Avenue, West Upton, Mass.		4 Stoneham Road, Worcester, Mass.	
BARTONY, Norman C.	Liberal Arts	COSTANZA, Jean M.	Liberal Arts
15 Village Street, Milis, Mass.		104 Mendon Street, Hopdale, Mass.	
BARKWELL, Judith A.	Exec. Secretarial	COSTELLO, John J.	Bus. Admin.
36 Clifford Street, Southboro, Mass.		217 Ingleside Avenue, Worcester, Mass.	
BARWICK, Marietta L.	Nursing	COURNOYER, Philip J.	Liberal Arts
74 Lakeside Park, Shrewsbury, Mass.		30 Worcester Street, Southbridge, Mass.	
BEAUCHEMIN, Paul A.	Liberal Arts	CRAIGER, Joseph E.	Bus. Admin.
111 Plantation Street, Worcester, Mass.		78 Long Avenue, Framingham, Mass.	
BECKER, John R.	Liberal Arts	CRONIN, Michael E.	Gen. Liberal Arts
3 Thayer Street, Worcester, Mass.		35 Francis Avenue, Shrewsbury, Mass.	
BEDARD, Gail A.	Liberal Arts	CROWLEY, Donna M.	Exec. Secretarial
Dana Road, Oxford, Mass.		241 Grafton Street, Shrewsbury, Mass.	
BELLEVILLE, Janice M.	Nursing	CROWLEY, Judith A.	Exec. Secretarial
17 Elm Street, Webster, Mass.		377 Lovell Street, Worcester, Mass.	
BIRD, David P.	Bus. Admin.	CROWTHER, James G.	Basic Engineering
David Road, West Milbury, Mass.		2 Loma Place, Framingham, Mass.	
BIROS, Mary D.	Liberal Arts	CULLEN, Richard J.	Bus. Admin.
103 Linwood Street, No. Uxbridge, Mass.		17 Colby Street, Northboro, Mass.	
BLACKWOOD, Mary R.	Nursing	CULLIN, George L.	Basic Engineering
22 Budd Drive, Dudley, Mass.		219 Oxford Street, Auburn, Mass.	
BLOMQUIST, Geigrie R.	Liberal Arts	CURL, Kenneth W.	Liberal Arts
53 Hawthorne Street, Auburn, Mass.		172 Milbury Street, Worcester, Mass.	
BLOUGH, Marion J.	Liberal Arts	CUSHING, Madeline M.	Exec. Secretarial
15 Lake Shore Drive, Spencer, Mass.		179 Vernon Street, Worcester, Mass.	
BONNICK, Edward	Liberal Arts	CUSUMANO, James J.	Gen. Liberal Arts
61 Harrington Ave., Shrewsbury, Mass.		22 School Street, Westboro, Mass.	
BORCI, Gastano P.	Liberal Arts	CZABAJ, Cynthia M.	Exec. Secretarial
12 Benedict Road, Worcester, Mass.		114 So. Main St., Gilbertville, Mass.	
BOUCHER, Aime D.	Liberal Arts	CZARKOWSKI, Thomas R.	Gen. Liberal Arts
2 Lakewood Ave., Worcester, Mass.		69 Washington Street, Marlboro, Mass.	
BOURGET, Philip R.	Liberal Arts	DADALT, Alexander A.	Liberal Arts
155 Dewey Street, Worcester, Mass.		558 Charlton Street, Southbridge, Mass.	
BOWKER, Calvin S.	Liberal Arts	DAIGNEAULT, Joseph P.	Liberal Arts
123 Mill Street, Worcester, Mass.		91 Road Street, Hudson, Mass.	
BOWLER, Margaret A.	Nursing	DAMORE, Francis R.	Liberal Arts
27 Shaffer Street, Worcester, Mass.		Locust Street, East Douglas, Mass.	
BRANTAS, Ramona V.	Exec. Secretarial	DANA, Merrill A.	Basic Engineering
59 Harrison Street, Worcester, Mass.		So. Oxford Road, West Milbury, Mass.	
BRONZO, Dennis P.	Liberal Arts	DANDRO, William L.	Liberal Arts
210 Ingleside Avenue, Worcester, Mass.		1 Gleason Way, Leicester, Mass.	
BRUSO, Sandra J.	Liberal Arts	DAY, Nancy J.	Bus. Admin.
16 May Street, Worcester, Mass.		Windrow Street, Lancaster, Mass.	
BUCK, Bruce E.	Bus. Admin.	DEC, David A.	Gen. Liberal Arts
217 South Street, Auburn, Mass.		55 Mill Street, Hopdale, Mass.	
BULL, Allen	Liberal Arts	DEFLMEAR, Philip A.	Liberal Arts
26 Island Drive, Worcester, Mass.		45 Grafton Street, Shrewsbury, Mass.	
BURGESS, Thomas C.	Basic Engineering	DEGEORGE, Leonard J.	Liberal Arts
1029 South Main Street, Bellingham, Mass.		11 Haven Street, Milford, Mass.	
BURGWINKEL, John A.	Bus. Admin.	DEMICHELE, Grace A.	Exec. Secretarial
77 Chase Street, Clinton, Mass.		81 Harriet Avenue, Shrewsbury, Mass.	
BURKE, Kathleen M.	Liberal Arts	DEPALMA, Janice P.	Gen. Liberal Arts
130 Endicott Street, Worcester, Mass.		17 Brookway Drive, Shrewsbury, Mass.	
BURKE, Stephen J.	Liberal Arts	DITULLIO, Caesar	Liberal Arts
24 Winfield Street, Worcester, Mass.		127 Beacon Street, Clinton, Mass.	
BURZENSKI, Chester J.	Gen. Liberal Arts	DOUCETTE, Paul J.	Engineering Tech.
207 Green Street, Clinton, Mass.		10 Windsor Street, Worcester, Mass.	
CAIRNS, Dennis V.	Liberal Arts	DOYLE, Therese M.	Exec. Secretarial
47 No. Main Street, Oakdale, Mass.		35 Sutton Road, Worcester, Mass.	
CALLAHAN, Elaine M.	Liberal Arts	DROLET, James W.	Bus. Admin.
3 Summer Street, Milford, Mass.		414 Chandler Street, Worcester, Mass.	
CAPLETTE, Marion T.	Nursing	DUFF, Terri C.	Liberal Arts
15 Bowker Street, Worcester, Mass.		Sherwood Hill Drive, Holden, Mass.	
CARDIN, Susan A.	Exec. Secretarial	DUFFY, Patricia A.	Exec. Secretarial
114 Ferry Street, So. Grafton, Mass.		493 School Street, Webster, Mass.	
CARLOS, Horace S.	Gen. Liberal Arts	DUFFY, Winfred J.	Gen. Liberal Arts
15 Picatin Avenue, Leicester, Mass.		2 Wauke Drive, Leicester, Mass.	
CARLSON, Joyce M.	Liberal Arts	DUMAS, Lucille T.	Liberal Arts
424 Mill Street, Worcester, Mass.		Cedar Street, Southbridge, Mass.	
CASSIDY, Paul T.	Liberal Arts	DUN, T. Kathryn	Gen. Liberal Arts
18 Old Central Tpke., Ashland, Mass.		472 Chandler Street, Worcester, Mass.	
CESARIO, Paul F.	Liberal Arts	DWIGHT, Patricia D.	Liberal Arts
40 Lincoln Street, Hudson, Mass.		52 Douglas Street, Uxbridge, Mass.	



LAHAIR, Kevin B.	Bus. Admin.	MEROLLA, Anthony A.	Liberal Arts
145 Kennedy Rd., Worcester, Mass.		7 W. Boylston Drive, Worcester	
LAMARCHE, Jacqueline B.	Exec. Sec.	MICHAELS, David D.	Liberal Arts
37 Colonial Avenue, Worcester, Mass.		30 Sterling St., Shrewsbury, Mass.	
LAFFER, Paul R.	Bus. Admin.	MICKOLA, Patricia J.	Liberal Arts
9 Milbrook St., Worcester, Mass.		31 Maples Rd., Worcester, Mass.	
LAFRIERE, Germaine T.	Gen. Liberal Arts	MIKELONIS, Elizabeth R.	Office Assistant
110 Warner Avenue, Shrewsbury, Mass.		35 Isabella Ave., Worcester, Mass.	
LARSEN, David R.	Liberal Arts	MIKITARIAN, Carrie	Liberal Arts
87 Main Street, East Douglas, Mass.		15 Kinsbury St., Worcester, Mass.	
LARSON, Francis E.	Liberal Arts	MILLER, Tom D.	Bus. Admin. Career
70 College Rd., Milford, Mass.		139 Soulebury St., Framingham, Mass.	
LAWRENCE, Jane A.	Bus. Admin.	MILLER, William F.	Liberal Arts
83 Malden St., Worcester, Mass.		55 Anderson Ave., Worcester, Mass.	
LAWTON, George P. Jr.	Engineering Tech.	MONROUQUETTE, Paul V.	Liberal Arts
19 St. Nicholas Ave., Worcester, Mass.		79 Beverly Rd., Worcester, Mass.	
LEARY, Linda M.	Liberal Arts	MONOHAN, Joan K.	Liberal Arts
89 Fifth Ave., Worcester, Mass.		26 St. Nicholas Ave., Worcester, Mass.	
LEBLANC, Jeanne M.	Liberal Arts	MORGAN, Craig R.	Engineering Tech.
268 Brigham Hill Rd., No. Grafton		19 Conant St., South Acton, Mass.	
LEITCH, James S.	Bus. Admin.	MORGAN, Robert J.	Bus. Admin.
66 Linwood Ave., Whitinsville, Mass.		23 Maple St., Webster, Mass.	
LEMANSKY, Robert F.	Bus. Admin.	MORTARTY, John F. Jr.	Liberal Arts
471 Southbridge St., Ashburnham, Mass.		95 Main St., Worcester, Mass.	
LEONARD, Vaughn E.	Basic Engineering	MORIN, Raymond R.	Engineering Tech.
10 Spofford Rd., Worcester, Mass.		30 Hildreth St., Marlboro, Mass.	
LEONTIRE, Amelia	Exec. Secretarial	MUIR, Terrence M.	Liberal Arts
2-Box Edge Dr., Worcester, Mass.		71 Barnes Road, Worcester, Mass.	
LEVERONE, William F.	Bus. Admin.	MULHALL, Marilyn A.	Liberal Arts
138 Oregon Rd., Ashland, Mass.		3 Park Drive, Marlboro, Mass.	
LEYDEN, Linda	Gen. Liberal Arts	MULHEARN, Maurine J.	Nursing
40 Tory Fort Lane, Worcester, Mass.		26 St. Nicholas Ave., Worcester, Mass.	
LINDHOLM, Diane G.	Liberal Arts	MURPHY, Jonathan W.	Bus. Admin.
12 Duffy St., Worcester, Mass.		11 Armadale St., Worcester, Mass.	
LINDQUIST, John W.	Bus. Admin.	MURPHY, Maureen E.	Liberal Arts
678 Burncoat St., Worcester, Mass.		183 Cherry St., Ashland, Mass.	
LINGA, Borislaw	Liberal Arts	MURTHA, Kevin R.	Bus. Admin.
58 Barry Road, Worcester, Mass.		9 Faircenter Rd., Hudson, Mass.	
LYNCH, Marjory A.	Bus. Admin.	NARLEAT, Michael A.	Engineering Tech.
14 Granite St., Cambridge, Mass.		15 Safford St., Worcester, Mass.	
LYONNAIS, Donald A.	Engineering	NASIF, Marian J.	Liberal Arts
141 Collette St., New Bedford, Mass.		25 Safford St., Worcester, Mass.	
LYONS, Daniel D.	Liberal Arts	NELSON, Gerald F.	Engineering Tech.
275 Plantation St., Worcester, Mass.		Rodstone Hill, Sterling, Mass.	
MAKAY, Donna C.	Exec. Secretarial	NELSON, James R.	Liberal Arts
26 Lake Shore Drive, Hopkinton		180 Cochituate Rd., Framingham	
MAKAY, Nancy B.	Liberal Arts	NELSON, Gregory A.	Engineering Tech.
212 Sudbury St., Marlboro, Mass.		27 Gilman St., Worcester, Mass.	
MADDAIO, Joseph P.	Bus. Admin.	NEWMAN, Beverly A.	Liberal Arts
49 Endicott St., Worcester, Mass.		31 North St., Shrewsbury, Mass.	
MADZONGWE, Edna	Liberal Arts	NICHOLS, Randy C.	Liberal Arts
185 Beacon St., Worcester, Mass.		27 Hudson St., Northboro, Mass.	
MADZUNO, Joseph C.	Liberal Arts	NOLAN, Kathleen E.	Liberal Arts
13 Rena St., Worcester, Mass.		149 Maple St., W. Boylston, Mass.	
MARIAKIAN, Kenneth G.	Liberal Arts	NOONE, Anne M.	Nursing
2 Carleton St., Worcester, Mass.		14 Shawmut Avenue, Hudson, Mass.	
MARKEET, David R.	Bus. Admin.	OBER, Karen A.	Exec. Sec.
Star Route, Colburnville, Mass.		11 Pineland Ave., Worcester, Mass.	
MARLEY, Thomas J.	Liberal Arts	O'BRIEN, Bernard A.	Liberal Arts
26 Ermiel St., Worcester, Mass.		128 Vernon St., Worcester, Mass.	
MASCIARELLI, Anna M.	Liberal Arts	O'BRIEN, David E.	Bus. Admin.
2 Walnut St., Hudson, Mass.		11 Tower St., Worcester, Mass.	
MAXON, Paul A.	Liberal Arts	O'CONNOR, Gary J.	Liberal Arts
150 West St., Worcester, Mass.		30 Lakeside Avenue, Worcester, Mass.	
MASSEY, Barbara A.	Gen. Liberal Arts	O'DOWD, Maureen F.	Exec. Sec.
112 Greene St., Hopkinton, Mass.		49 Prudential Rd., Worcester, Mass.	
MASSEY, Russell G.	Bus. Admin.	OLMSTED, Kathryn E.	Nursing
2177 Providence Rd., Northbridge		34 Ash Street, Spencer, Mass.	
MATHIEU, Sharon P.	Nursing	O'MALLEY, Peter R.	Liberal Arts
964 Providence Rd., Northbridge		20 Main St., Clinton, Mass.	
MAZNICK, Jeannette	Exec. Secretarial	OOSTERMAN, Ralph E.	Gen. Liberal Arts
82 Main St., Leicester, Mass.		30 Prospect St., Whitinsville, Mass.	
MAZZOLINI, Joseph P.	Liberal Arts	OROSKO, Mary E.	Exec. Sec.
304 Lancaster St., W. Boylston, Mass.		PACIOLO, Juliana	Liberal Arts
MEANUTY, Albert J.	Business Admin.	23 Puritan Ave., Worcester, Mass.	
24 Bonaparte Drive, Framingham, Mass.		PALMER, Thomas A.	Liberal Arts
MCABE, Visian J.	Exec. Sec.	11 Wesley Drive, Leicester, Mass.	
40 Longfellow Rd., Worcester, Mass.		PALMIERI, Robert B.	Gen. Liberal Arts
McCALLUM, Kenneth P.	Engineering Tech.	247 Shrewsbury St., Worcester, Mass.	
North St., East Douglas, Mass.		PAPSON, Christine M.	Exec. Sec.
McCONKRO, Joan E.	Nursing	41 Angela Avenue, Shrewsbury, Mass.	
47 Tyler St., Natick, Mass.		PARMENTER, John R. II	Liberal Arts
McGORMICK, John F.	Liberal Arts	521 Essex Road, Framingham, Mass.	
36 Church St., W. Boylston, Mass.		PENTLAND, Susan C.	Liberal Arts
McFEE, June A.	Nursing	4 Henschen St., Worcester, Mass.	
453 Lake Ave., Worcester, Mass.		PERLA, Paul A.	Liberal Arts
McGRATH, Carol E.	Exec. Secretarial	27 Grove St., Clinton, Mass.	
13 Hudson Lane, Worcester, Mass.		PERNA, Anthony J.	Bus. Admin.
McGRATH, Leslie A.	Liberal Arts	34-12 Adams St., Worcester, Mass.	
13 Pine St., Worcester, Mass.		PERRY, Bobby L.	Engineering Tech.
McGUINNESS, Derrin H.	Bus. Admin.	Macon St., Millbury, Mass.	
26 Dawson Circle, Shrewsbury, Mass.		PERRY, Edward E.	Bus. Admin.
McHAYNE, Paul A.	Bus. Admin.	9 Waters Court, Millbury, Mass.	
W. Leonard Road, Ashburnham, Mass.		PICARD, Roger R.	Bus. Admin.
McKENY, Julie W.	Engineering Tech.	119 Millbury Avenue, Millbury, Mass.	
75 Main St., Holden, Mass.		POCIS, Janet C.	Bus. Admin.
McKERNAN, Edward F.	Liberal Arts	22 Spruce St., North Brookfield	
42 Middlesex Avenue, Worcester, Mass.		PODLESNEY, Karen A.	Liberal Arts
McNAMARA, Ann M.	Gen. Liberal Arts	666 Berlin Road, Marlboro, Mass.	
42 June St., Worcester, Mass.		PORTER, William	Liberal Arts
McNERNEY, Jean F.	Liberal Arts	111 St. Westboro, Mass.	
18 Millbury Road, Oxford, Mass.		POWER, Kathleen E.	Nursing
McROBERT, Deane H.	Liberal Arts	4 Fishon Road, Worcester, Mass.	
21 Walnut St., Natick, Mass.		PRESCOTT, Susan	Gen. Liberal Arts
McSHANE, Kevin P.	Liberal Arts	Pontemountain Road, Rutland, Mass.	
112 School St., Northboro, Mass.		QUINN, Maureen E.	Nursing
MELICAN, Bernard J.	Liberal Arts	16 Kinsbury Avenue, Worcester, Mass.	
6 Haddon Lane, Paxton, Mass.			



RAFTERY, Terrance F.	Liberal Arts	SOUCY, Wallace P.	Gen. Liberal Arts
1274 Pleasant St., Worcester, Mass.		6 Circuit Ave. South, Worcester	
RANO, Diane M.	Gen. Liberal Arts	SOUTHALL, Jane A.	Liberal Arts
12 Mount Boulevard, Shrewsbury, Mass.		R.F.D. 11, Southbridge, Mass.	
RAWDING, Judith A.	Exec. Sec.	SPALATRO, Anthony M.	Liberal Arts
138 Copperfield Rd., Worcester, Mass.		45 Benedict Road, Worcester, Mass.	
RAYMOND, George P.	Bus. Admin.	STANDING, Peter G.	Liberal Arts
7 Keith Road, South Grafton, Mass.		23 Horseshoe Drive, Auburn, Mass.	
REARDON, Cora A.	Nursing	STOCKMAL, Katherine A.	Exec. Sec.
Route 146, Millbury, Mass.		139 Allston Avenue, Worcester, Mass.	
RICHARDSON, Robert J.	Gen. Liberal Arts	SUCHOCKI, David A.	Gen. Liberal Arts
15 Ridgewood Road, Worcester, Mass.		50 Camp St., Webster, Mass.	
RICHTER, Kathleen M.	Bus. Admin.	SUDDAK, Margaret G.	Nursing
4 Huntley St., Worcester, Mass.		2 Holland Road, Worcester, Mass.	
RIDGE, Michael J.	Bus. Admin.	SULLIVAN, James II	Gen. Liberal Arts
219 Grove St., Framingham, Mass.		141 Concord St., Framingham, Mass.	
RITACCO, Richard D.	Liberal Arts	SUNDIN, Norman P.	Gen. Liberal Arts
231 Oak St., Shrewsbury, Mass.		11 Caroline St., Worcester, Mass.	
ROBINSON, James I.	Liberal Arts	SWENSON, Roy E.	Engineering Tech.
34 Dutton St., Worcester, Mass.		South Street, Douglas, Mass.	
ROBINSON, Ronald A.	Bus. Admin.	TAFT, Jane M.	Exec. Sec.
14 Bowen St., West Boylston, Mass.		50 Martin Street, Millbury, Mass.	
ROGERS, Claudine A.	Nursing	TAMBURRO, Angelo R.	Liberal Arts
186 High St., Winchester, Mass.		56 Harriet Avenue, Shrewsbury, Mass.	
ROHAN, Karen E.	Liberal Arts	TANCHELL, Muriel L.	Liberal Arts
Colonial Park, Webster, Mass.		12 Carter Avenue, Blackstone, Mass.	
ROONEY, Richard P.	Bus. Admin.	TAYLOR, Howard L.	Liberal Arts
234 Constitution Avenue, Worcester		1 Gates Terrace, Sterling, Mass.	
ROSS, Stephen G.	Bus. Admin.	TELLIER, Gabrielle A.	Nursing
80 Central St., Hudson, Mass.		Sleeper Road, Leominster, Mass.	
ROUSSEAU, William C.	Liberal Arts	TERASCONI, Dennis M.	Bus. Admin.
45 Paine St., Worcester, Mass.		6 Park Terrace, Milford, Mass.	
RUSS, Rosemary	Bus. Admin.	TESO, Anthony	Liberal Arts
No. Brookfield Road, Oakham, Mass.		1 Normal Street, Worcester, Mass.	
RUSSELL, David R.	Engineering Tech.	THIBAUT, Rosanne G.	Nursing
Lincoln Road, Sutton, Mass.		THOMPSON, Dennis F.	Liberal Arts
RUSSELL, Kendall A.	Bus. Admin.	15 Wellesley Road, Natick, Mass.	
22 Sycamore St., Holden, Mass.		TIERNEY, Kenneth A.	Bus. Admin.
RYZAL, Nancy J.	Gen. Liberal Arts	20 Appleton Road, Auburn, Mass.	
50 Poland St., Webster, Mass.		TODD, Anthony J.	Gen. Liberal Arts
SAFER, Raymond T.	Liberal Arts	12 West Avenue, Shrewsbury, Mass.	
88 Broadway Drive, Shrewsbury, Mass.		TOMASZEWSKI, Reginald	Gen. Liberal Arts
ST GERMAIN, Helen V.	Gen. Liberal Arts	83 Agate Drive, Framingham, Mass.	
10 Orchard St., Bellingham, Mass.		TODD, James P.	Bus. Admin.
SALKALAN, Joseph C.	Liberal Arts	25 Broad Street, Marlboro, Mass.	
123 Dana Avenue, Worcester, Mass.		TOSCANO, Ursula S.	Nursing
SALOME, Barbara J.	Exec. Sec.	1 Townsend Street, Worcester, Mass.	
216 Park Avenue, Worcester, Mass.		TOSCHES, Peter J.	Liberal Arts
SAVASTANO, Frank J.	Liberal Arts	23 Short Street, Milford, Mass.	
22 Tampa St., Worcester, Mass.		TRAINOR, Ann M.	Exec. Sec.
SAWYER, Clifford B.	Bus. Admin.	24 Putnam Avenue, Worcester, Mass.	
24 Bowdoin St., Worcester, Mass.		TRAYNOR, Frank M.	Nursing
SCERRA, Paula F.	Liberal Arts	76 Grove Street, Milford, Mass.	
194 Boyce St., Auburn, Mass.		TREMBLAY, Richard E.	Bus. Admin.
SCHMIDT, Robert P.	Liberal Arts	35 Phillips Ave., Shrewsbury, Mass.	
89 West St., Clinton, Mass.		TROMBLEY, Jo-Ann L.	Exec. Sec.
SCHNEIDER, Gwynn A.	Liberal Arts	4 Bishop Avenue, Worcester, Mass.	
17 Lexington Ave., Leicester, Mass.		UPPSTROM, Stephen H.	Engineering Tech.
SCHONBERG, Linda J.	Liberal Arts	127 North Lake Ave., Worcester, Mass.	
71 Howard St., Northboro, Mass.		VALLEE, Denis A.	Gen. Liberal Arts
SCHUNKE, Janet L.	Exec. Sec.	100 St. Ludlow St., Worcester, Mass.	
34 Brookhaven Road, Worcester, Mass.		VAN WERT, James S.	Bus. Admin.
SEARS, David G.	Bus. Admin.	185 Shrewsbury St., Holden, Mass.	
Libridge Road, Mendon, Mass.		VIANO, William F.	Bus. Admin.
SENECAL, Linda Joyce	Liberal Arts	243 Lancaster St., West Boylston	
182 Eliot Street, Ashland, Mass.		VILLANI, Mary J.	Liberal Arts
SHARON, Barbara A.	Nursing	17 Bull Road, Milford, Mass.	
56 Norfolk St., Worcester, Mass.		VILLATICO, Paula F.	Liberal Arts
SHARISTANIAN, Albert C.	Liberal Arts	27 Carter St., Worcester, Mass.	
1 Plantation Terrace, Worcester		VINCEQUE, Elizabeth M.	Liberal Arts
SHARRY, Anne M.	Liberal Arts	Orion St., Worcester, Mass.	
16 Lakeside Avenue, Worcester, Mass.		WALKER, Robert C.	Liberal Arts
SHAW, Kathryn E.	Exec. Sec.	49 Orme St., Worcester, Mass.	
14 Vega Drive, Shrewsbury, Mass.		WALSH, Patricia L.	Liberal Arts
SHELDON, Susan J.	Liberal Arts	101 Pickard St., Hudson, Mass.	
Fiske Hill Road, Shubridge, Mass.		WALSH, Rosemary	Liberal Arts
SHERIDAN, J.	Engineering Tech.	64 Cabanel St., Worcester, Mass.	
293 St. Nicholas St., Worcester		WARE, Mary B.	Liberal Arts
SIMARD, Paul A.	Liberal Arts	64 Homestead Rd., Holden, Mass.	
2 Diana St., Blackstone, Mass.		WETHERILL, John II	Gen. Liberal Arts
SIZEMORE, Rosemond T.	Nursing	368 Sterling St., Clinton, Mass.	
111 Holden St., Worcester, Mass.		WHARTON, Edna M.	Nursing
SKOWRON, Yvonne M.R.	Gen. Liberal Arts	32 Elmwood St., South Grafton, Mass.	
Nancy Drive, Webster, Mass.		WILES, Irene J.	Exec. Sec.
SLINLEY, Susan J.	Liberal Arts	16 Cedar Rd., Shrewsbury, Mass.	
155 Maple St., Framingham, Mass.		WILLIAMS, Anne F.	Bus. Admin.
SLOAN, Mylan B.	Liberal Arts	78 Mount Pleasant St., Milford, Mass.	
41 Clearview Avenue, Worcester, Mass.		WINE, Ernest A.	Liberal Arts
SMELTZER, Donna M.	Liberal Arts	100 West Avenue, East Brookfield, Mass.	
Curtis Hill Road, Chatham, Mass.		WITHSTANDLEY, Jeffrey K.	Liberal Arts
SMITH, John F.	Bus. Admin.	89 Charlton Rd., Hampton, New Jersey	
2 Squantum Ave., Worcester, Mass.		WOJNICKI, Michael	Liberal Arts
SMITH, Robert J.	Liberal Arts	Milford St., Mendon, Mass.	
10 Westview Road, Worcester, Mass.		WOITAS, Carol A.	Liberal Arts
SMYTH, Maureen B.	Liberal Arts	70 Leicester St., North Oxford, Mass.	
22 Rob Roy Road, Worcester, Mass.		WRENNE, Beverly S.	Nursing
SNARKIN, John C.	Gen. Liberal Arts	49 East Main St., Milford, Mass.	
11 Melville St., Worcester, Mass.		YOUNG, Charlotte A.	Liberal Arts
SNYDER, Christine A.	Liberal Arts	46 Irving St., Spencer, Mass.	
106 Haskell Ave., Clinton, Mass.		TURNAN, Anne M.	
SOO HOO, Mary W.		126 Forest Ave., Hudson, Mass.	
325 High St., Clinton, Mass.			

# Faculty Dress Code..









